

NOTES:

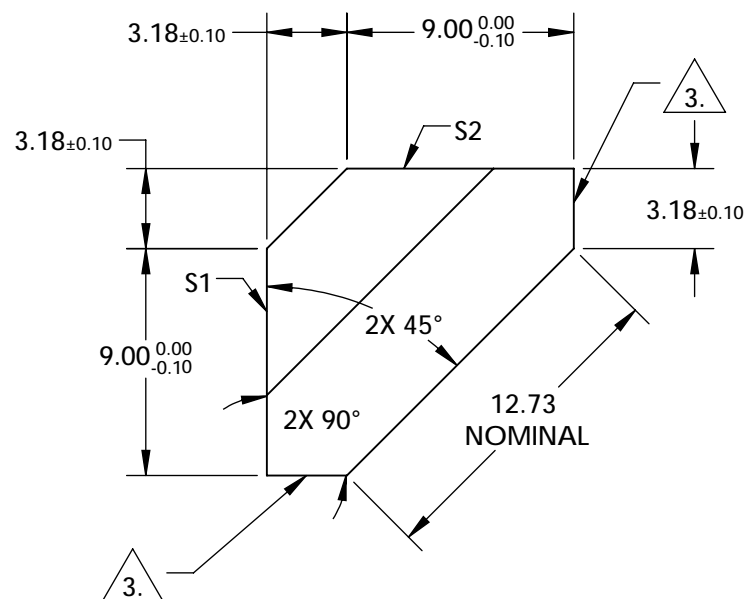
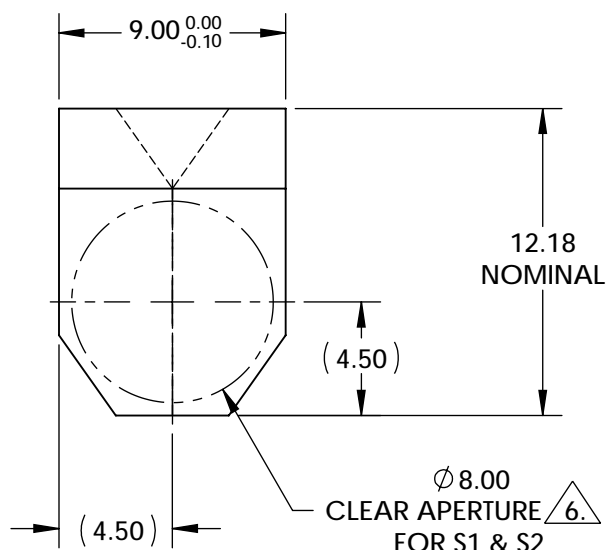
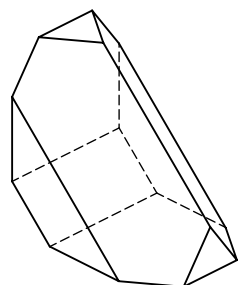
1. SUBSTRATE : N-BK7
2. COATING (APPLY ACROSS CLEAR APERTURE)
 - S1 & S2 : NONE
 - S3 & S4 : PROTECTED SILVER COATED
 - R(ABS) > 97% FROM 400 - 2500nm @ 0° AOI
 - R(AVG) > 98% FROM 400 - 2500nm @ 0° AOI
 - NOTE: Black Overpaint is 30-60µm Thick

3. FINE GRIND SURFACE

4. RoHS COMPLIANT

5. CLEAR & COATING APERTURES ON S3 AND S4 TO MEET AR ROOF EDGE. 1mm FROM ALL OTHER EDGES

**FOR INFORMATION ONLY:
DO NOT MANUFACTURE
PARTS TO THIS DRAWING**

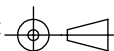


	S1 & S2	S3 & S4
SHAPE	PLANO	PLANO
RESOLUTION (arcsec)	6	6
ANGLE TOL. (arcmin)	±5	±5
WAVELENGTH RANGE (nm)	350 - 2200	350 - 2200
SURFACE QUALITY	60-40	60-40
SURFACE FLATNESS	λ/2	λ/2
MIN CLEAR APERTURE	6.	5.
MIN COATING APERTURE	N/A	5.
BEVEL	PROTECTIVE AS NEEDED	PROTECTIVE AS NEEDED

SPECIFICATIONS SUBJECT TO CHANGE WITHOUT NOTICE
DIMENSIONS ARE FOR REFERENCE ONLY

Edmund Optics®

THIRD ANGLE
PROJECTION



ALL DIMS IN

mm

TITLE

9mm PROTECTED SILVER COATED, AMICI
ROOF PRISM

DWG NO

12638

SHEET
1 OF 1