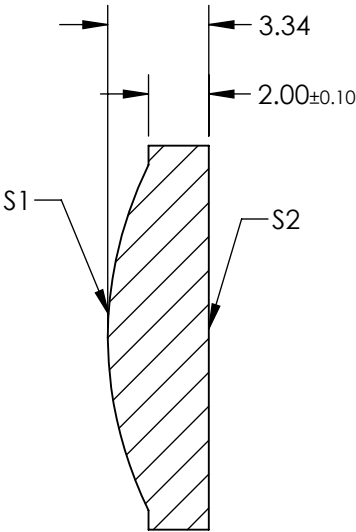
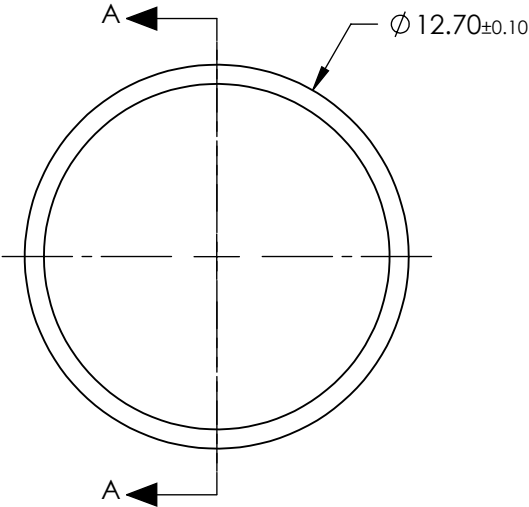



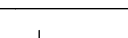
- NOTES:
1. MATERIAL: PMMA
 2. COATING (APPLY ACROSS CLEAR APERTURE):
 $R(AVG) < 0.5\% @ 700 - 1100nm$
 3. FOCAL LENGTH TOLERANCE: $\pm 1\%$
 4. RoHS: COMPLIANT



SECTION A-A

**FOR INFORMATION ONLY:
DO NOT MANUFACTURE
PARTS TO THIS DRAWING**

SPECIFICATIONS SUBJECT TO CHANGE WITHOUT NOTICE
DIMENSIONS ARE FOR REFERENCE ONLY

			EFL: 25.40mm		 Edmund Optics®		
			BFL: 23.20mm				
	S1	S2	THIRD ANGLE PROJECTION 	TITLE	12.7mm DIA. f/2 NIR COATED, MOLDED ACRYLIC ASPHERIC LENS		
SHAPE	CONVEX	PLANO					
BEVEL MAX FACE	PROTECTIVE AS NEEDED	PROTECTIVE AS NEEDED	ALL DIMS IN	mm	DWG NO	64581	SHEET 1 OF 1