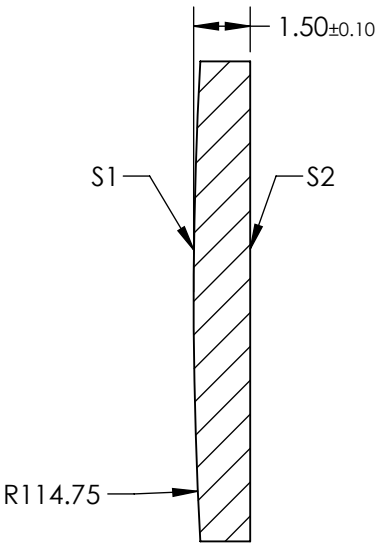
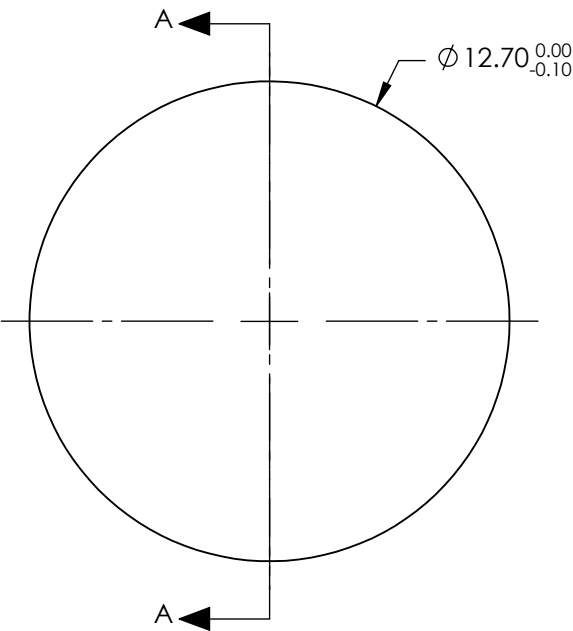


NOTES:

- 1. SUBSTRATE: FUSED SILICA
- 2. COATING:  
S1 & S2: R(ABS) <0.1% @ 700 - 900nm
- 3. CENTERING: < 3 ARCMIN
- 4. RoHS: COMPLIANT


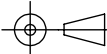
FOR INFORMATION ONLY:  
DO NOT MANUFACTURE  
PARTS TO THIS DRAWING



SECTION A-A

SPECIFICATIONS SUBJECT TO CHANGE WITHOUT NOTICE  
DIMENSIONS ARE FOR REFERENCE ONLY

	S1	S2
SHAPE	CONVEX	PLANO
SURFACE QUALITY	20-10	20-10
CLEAR APERTURE	Ø11.43	Ø11.43
BEVEL	PROTECTIVE AS NEEDED	PROTECTIVE AS NEEDED

EFL: 250.29 mm		<div><div> Edmund Optics®</div></div>		
BFL: 249.26 mm				
THIRD ANGLE PROJECTION 		TITLE	12.7mm Diameter x 250mm FL, 700-900nm Coated, Ultrafast Thin PCX Lens	
ALL DIMS IN	mm	DWG NO	11658	SHEET 1 OF 1