

NOTES:

- 1. SUBSTRATE: FUSED SILICA
- 2. COATING:

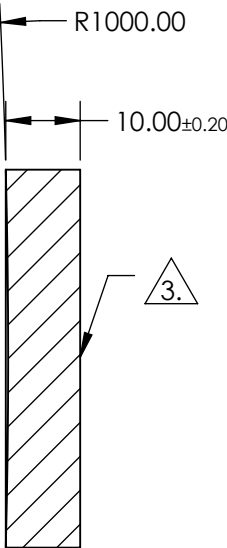
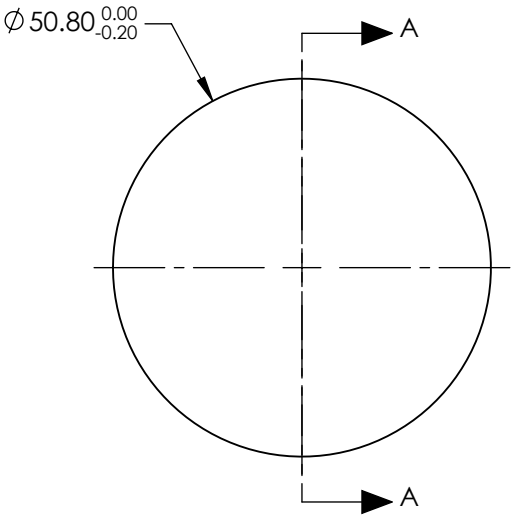
S1: R(ABS) >99.80% @ 532nm @ 0-45° AOI
DAMAGE THRESHOLD, PULSED: 10J/cm² @ 532nm, 20ns, 20Hz
DAMAGE THRESHOLD, CW: 1MW/cm² @ 532nm

S2: NONE

3. FINE GRIND SURFACE


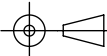
- 4. RoHS: COMPLIANT

FOR INFORMATION ONLY:
DO NOT MANUFACTURE
PARTS TO THIS DRAWING



SECTION A-A

SPECIFICATIONS SUBJECT TO CHANGE WITHOUT NOTICE
DIMENSIONS ARE FOR REFERENCE ONLY

| | | | | | | | |
|------------------|----------------------|----------------------|---|----|--|---|--------------|
| | S1 | S2 | EFL: 500mm | |  Edmund Optics® | | |
| SHAPE | CONCAVE | PLANO | BFL: N/A | | | | |
| SURFACE QUALITY | 20-10 | FINE GRIND |  | | TITLE | 50.8mm Dia. x 500mm EFL, 532nm 0-45°, Concave Laser Line Mirror | |
| SURFACE FLATNESS | 3λ/20 | N/A | | | | | |
| CLEAR APERTURE | Ø45.72 | N/A | | | | | |
| BEVEL | PROTECTIVE AS NEEDED | PROTECTIVE AS NEEDED | ALL DIMS IN | mm | DWG NO | 11341 | SHEET 1 OF 1 |