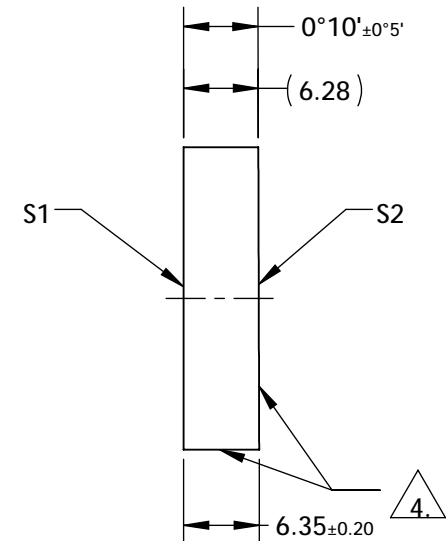
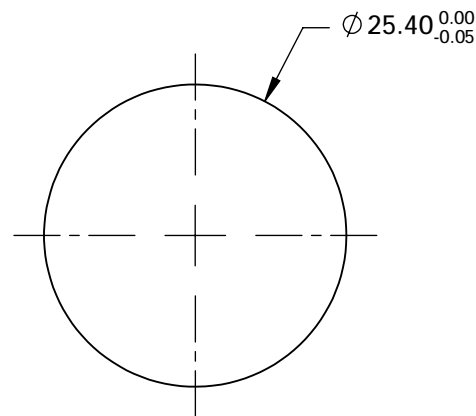


NOTES:

1. SUBSTRATE:  
FUSED SILICA
2. SURFACE S1 TO BE PARALLEL TO SURFACE S2 TO WITHIN <10 ARCMIN
3. COATING (APPLY ACROSS COATING APERTURE):  
S1: ULTRAFAST (2000-2200nm)  
R(AVG) >99.9% @ 2000 - 2200nm (P-POLARIZATION) @5° AOI  
GDD: -1000fs<sup>2</sup> (P-POLARIZATION)
- S2: NONE

4. COMMERCIAL POLISH SURFACE

5. SURFACE QUALITY SPECIFICATIONS APPLY ACROSS CLEAR APERTURE
6. ROHS COMPLIANT



**FOR INFORMATION ONLY:  
DO NOT MANUFACTURE  
PARTS TO THIS DRAWING**

SPECIFICATIONS SUBJECT TO CHANGE WITHOUT NOTICE  
DIMENSIONS ARE FOR REFERENCE ONLY

	S1	S2
SHAPE	PLANO	PLANO
IRREGULARITY	0.10 WAVE	N/A
CLEAR APERTURE	Ø10.16	N/A
COATING APERTURE	Ø10.16	N/A
BEVEL	PROTECTIVE AS NEEDED	PROTECTIVE AS NEEDED



ALL DIMS IN

mm



Edmund Optics®

TITLE

25.4mm 5°, 2µm HIGHLY-DISPERSIVE  
ULTRAFAST MIRROR

DWG NO

11414

SHEET  
1 OF 1