

NOTES:

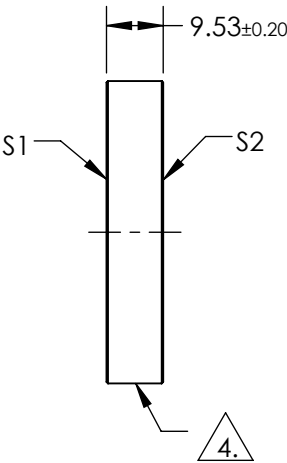
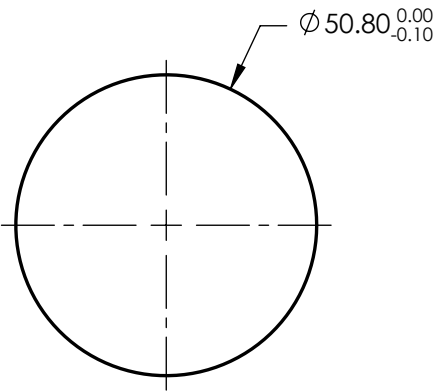
1. SUBSTRATE:
Fused Silica
2. S2 TO BE PARALLEL TO S1 TO WITHIN <3 ARCMINS
3. COATING (APPLY ACROSS COATING APERTURE)

S1 & S2: 1064nm High Laser AR Coating
R(ABS) < 0.10% @ 1064nm @ 0° AOI

DAMAGE THRESHOLD,
PUSLED: 15 J/cm² @ 20ns , 20 Hz @ 1064nm

4. FINE GROUND SURFACE

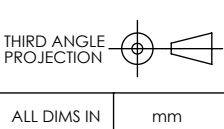
5. CLEAR APERTURE AND COATING APERTURE ARE CENTERED ON SURFACE
6. ROHS COMPLIANT



**FOR INFORMATION ONLY:
DO NOT MANUFACTURE
PARTS TO THIS DRAWING**

SPECIFICATIONS SUBJECT TO CHANGE WITHOUT NOTICE
DIMENSIONS ARE FOR REFERENCE ONLY

	S1	S2
SHAPE	PLANO	PLANO
SURFACE QUALITY	10-5	10-5
SURFACE FLATNESS	0.10 WAVE	0.10 WAVE
CLEAR APERTURE	Ø45.72	Ø45.72
COATING APERTURE	Ø45.72	Ø45.72
BEVEL	PROTECTIVE AS NEEDED	PROTECTIVE AS NEEDED



Edmund Optics®

TITLE 0.1R 1064nm Laser Window 50.8 Dia x 9.53

DWG NO 11282

SHEET
1 OF 1