

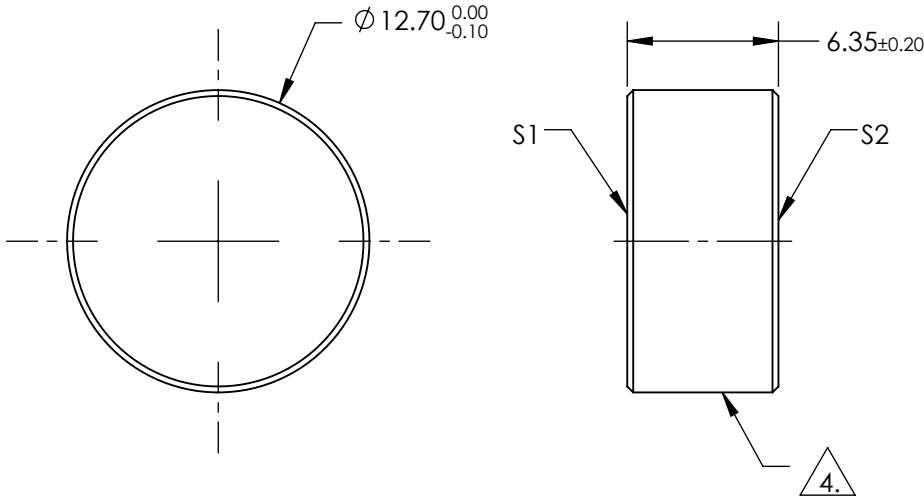
NOTES:

1. SUBSTRATE:
Fused Silica
2. S2 TO BE PARALLEL TO S1 TO WITHIN <3 ARCMINS
3. COATING (APPLY ACROSS COATING APERTURE)

S1 & S2: 1064nm High Laser AR Coating
R(ABS) < 0.10% @ 1064nm @ 0° AOI

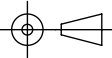
DAMAGE THRESHOLD,
PUSLED: 15 J/cm² @ 20ns , 20 Hz @ 1064nm

4. FINE GROUND SURFACE
5. CLEAR APERTURE AND COATING APERTURE ARE CENTERED ON SURFACE
 6. ROHS COMPLIANT



**FOR INFORMATION ONLY:
DO NOT MANUFACTURE
PARTS TO THIS DRAWING**

SPECIFICATIONS SUBJECT TO CHANGE WITHOUT NOTICE
DIMENSIONS ARE FOR REFERENCE ONLY

	S1	S2				
SHAPE	PLANO	PLANO				
SURFACE QUALITY	10-5	10-5				
SURFACE FLATNESS	0.10 WAVE	0.10 WAVE	TITLE			
CLEAR APERTURE	Ø11.43	Ø11.43				
COATING APERTURE	Ø11.43	Ø11.43	0.1R 1064nm Laser Window 12.7 Dia x 6.35			
BEVEL	PROTECTIVE AS NEEDED	PROTECTIVE AS NEEDED				
			ALL DIMS IN	mm	DWG NO	11275
						SHEET 1 OF 1

 **Edmund Optics®**

0.1R 1064nm Laser Window 12.7 Dia x 6.35