

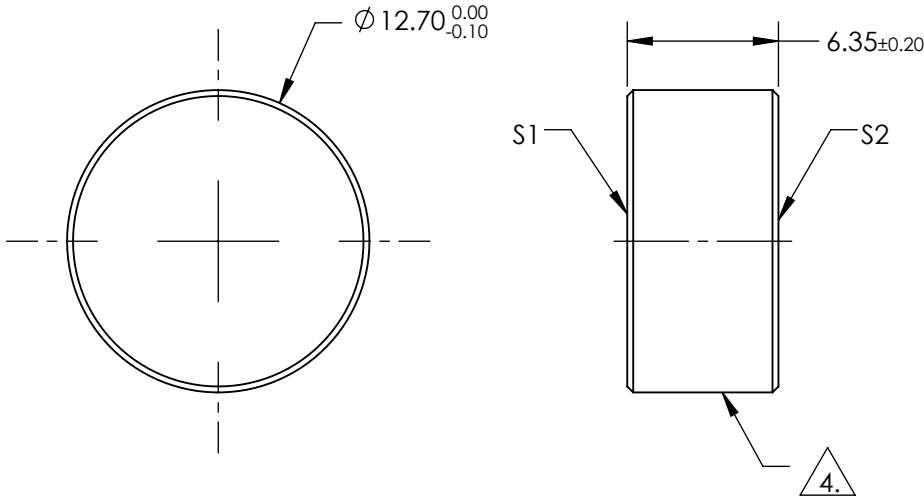
NOTES:

1. SUBSTRATE:  
Fused Silica
2. S2 TO BE PARALLEL TO S1 TO WITHIN <3 ARCMINS
3. COATING (APPLY ACROSS COATING APERTURE)

S1 & S2: 355nm High Laser AR Coating  
R(ABS) < 0.10% @ 355nm @ 0° AOI


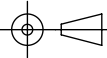
DAMAGE THRESHOLD,  
PUSLED: 7.5 J/cm² @ 20ns , 20 Hz @ 355nm

4. FINE GROUND SURFACE
5. CLEAR APERTURE AND COATING APERTURE ARE CENTERED ON SURFACE
  6. ROHS COMPLIANT



**FOR INFORMATION ONLY:  
DO NOT MANUFACTURE  
PARTS TO THIS DRAWING**

SPECIFICATIONS SUBJECT TO CHANGE WITHOUT NOTICE  
DIMENSIONS ARE FOR REFERENCE ONLY

	S1	S2				
SHAPE	PLANO	PLANO	 Edmund Optics®			
SURFACE QUALITY	10-5	10-5				
SURFACE FLATNESS	0.10 WAVE	0.10 WAVE	TITLE0.1R 355nm Laser Window 12.7 Dia x 6.35			
CLEAR APERTURE	Ø11.43	Ø11.43				
COATING APERTURE	Ø11.43	Ø11.43	DWG NO11243			
BEVEL	PROTECTIVE AS NEEDED	PROTECTIVE AS NEEDED				
			THIRD ANGLE PROJECTION 	SHEET1 OF 1		
			ALL DIMS INmm			