

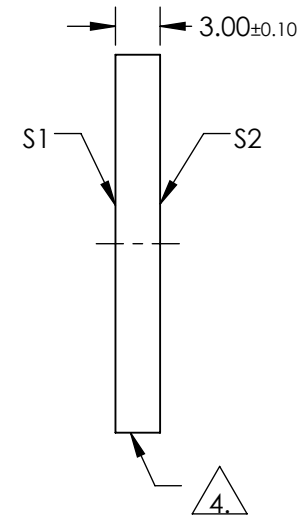
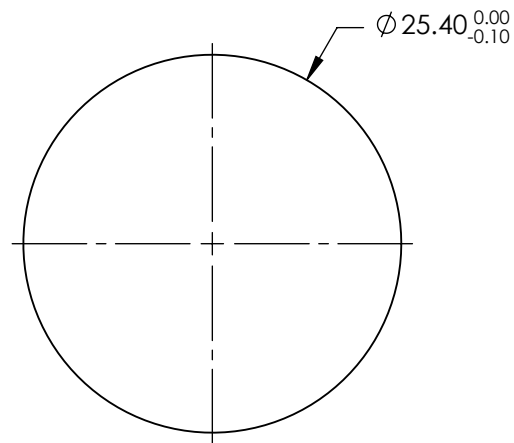
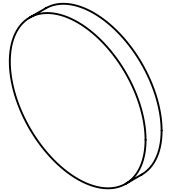
NOTES:

1. SUBSTRATE: ZnSe
2. SURFACE S2 TO BE PARALLEL TO SURFACE S1 TO WITHIN < 3 ARCMIN
3. COATING (APPLY ACROSS COATING APERTURE)

S1 & S2: HIGH- EFFICIENCY BROADBAND (BBAR)  
 $R(AVG) \leq 3.0\%$  FROM 3 - 12 $\mu$ m

4. FINE GRIND SURFACE

5. RoHS: COMPLIANT



**FOR INFORMATION ONLY:  
DO NOT MANUFACTURE  
PARTS TO THIS DRAWING**

SPECIFICATIONS SUBJECT TO CHANGE WITHOUT NOTICE  
DIMENSIONS ARE FOR REFERENCE ONLY

	S1	S2
SHAPE	PLANO	PLANO
SURFACE QUALITY	40-20	40-20
SURFACE FLATNESS @ 10.6 $\mu$ m	$\lambda/20$	$\lambda/20$
CLEAR APERTURE	Ø22.86	Ø22.86
BEVEL	PROTECTIVE AS NEEDED	PROTECTIVE AS NEEDED



ALL DIMS IN mm

**EO<sup>®</sup> Edmund Optics<sup>®</sup>**

TITLE

25.4mm DIA x 3mm THICK 3 - 12 $\mu$ m COATED  
ZnSe WINDOW

DWG NO

39410

SHEET  
1 OF 1