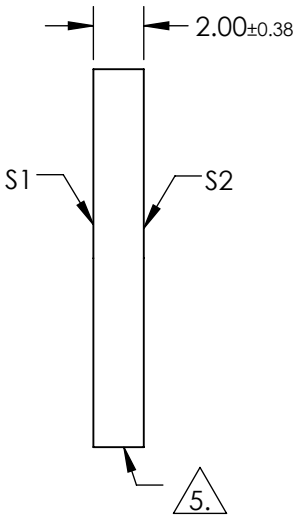
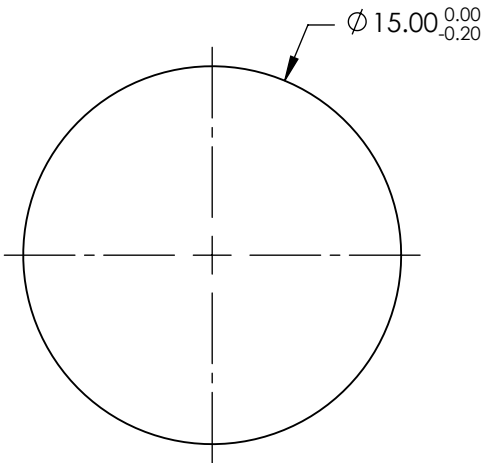


NOTES:

- 1. SUBSTRATE: FUSED SILICA
- 2. RoHS: COMPLIANT
- 3. SURFACE S2 TO BE PARALLEL TO SURFACE S1 TO WITHIN < 5 ARCMIN
- 4. COATING (APPLY ACROSS COATING APERTURE)  
S1 & S2: R(ABS) ≤1.5% FROM 750 - 800nm  
R(ABS) ≤1.0% FROM 800 - 1550nm  
R(AVG) ≤0.7% FROM 750 - 1550nm

5. FINE GRIND SURFACE




**FOR INFORMATION ONLY:  
DO NOT MANUFACTURE  
PARTS TO THIS DRAWING**

SPECIFICATIONS SUBJECT TO CHANGE WITHOUT NOTICE  
DIMENSIONS ARE FOR REFERENCE ONLY

	S1	S2
SHAPE	PLANO	PLANO
SURFACE ACCURACY	1λ	1λ
SURFACE QUALITY	60-40	60-40
CLEAR APERTURE	Ø13.50	Ø13.50
BEVEL	PROTECTIVE AS NEEDED	PROTECTIVE AS NEEDED

THIRD ANGLE  
PROJECTION

ALL DIMS IN mm

 **Edmund Optics®**

TITLE	15mm DIA. NIR II COATED, 1λ FUSED SILICA WINDOW		
DWG NO	39297	SHEET 1 OF 1	