

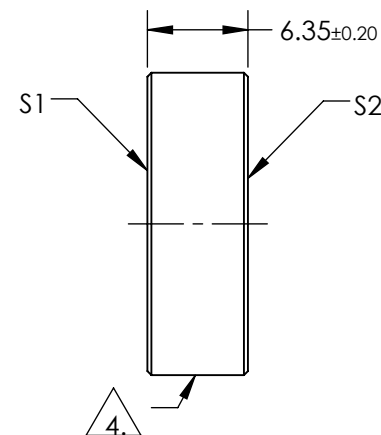
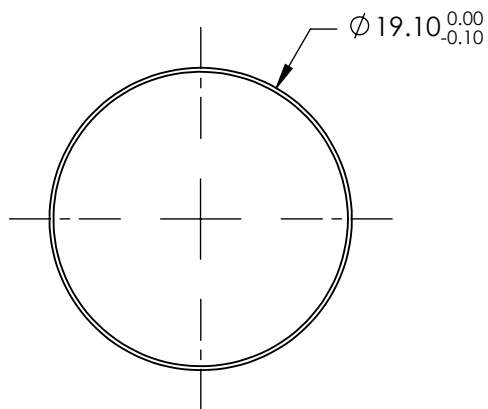
1. SUBSTRATE:
FUSED SILICA

- S1 & S2: $R(\text{ABS}) < 0.25\% @ 1080\text{nm} @ 0^\circ \text{AOI}$

DAMAGE THRESHOLD
PULSED: 15J/cm² @ 20ns, 20Hz @ 1080nm

- #### 4. FINE GROUND SURFACE

5. CLEAR APERTURE AND COATING APERTURE ARE CENTERED ON SURFACE
6. SURFACE QUALITY SPECIFICATIONS APPLY ACROSS CLEAR APERTURE
7. ROHS COMPLIANT



**FOR INFORMATION ONLY:
DO NOT MANUFACTURE
PARTS TO THIS DRAWING**

 Edmund Optics®

	S1	S2
SHAPE	PLANO	PLANO
SURFACE QUALITY	10-5	10-5
SURFACE FLATNESS	$\lambda/10$	$\lambda/10$
MIN CLEAR APERTURE	Ø17.19	Ø17.19
BEVEL	PROTECTIVE AS NEEDED	PROTECTIVE AS NEEDED

THIRD ANGLE PROJECTION

ALL DIMS IN mm

TITLE

Ø19.1mm x 6.35mm 1080nm FS LASER
WINDOW

DWG NO

11399

SHEET
1 OF 1