

NOTES:

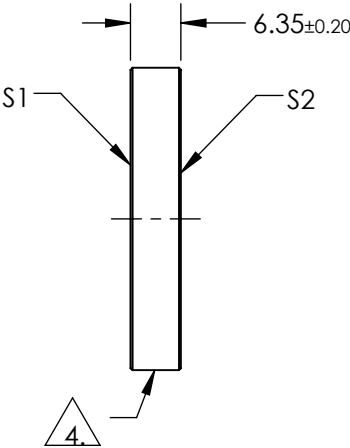
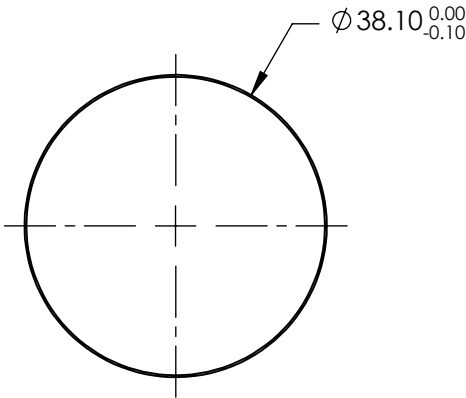
1. SUBSTRATE:
N-BK7
2. S2 TO BE PARALLEL TO S1 TO WITHIN <3 ARCMINS
3. COATING (APPLY ACROSS COATING APERTURE)

S1 & S2: R(ABS) < 0.25% @ 1080nm @ 0° AOI

DAMAGE THRESHOLD
PULSED: 15J/cm² @ 20ns, 20Hz @ 1080nm


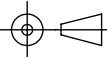
4. FINE GROUND SURFACE

5. CLEAR APERTURE AND COATING APERTURE ARE CENTERED ON SURFACE
6. SURFACE QUALITY SPECIFICATIONS APPLY ACROSS CLEAR APERTURE
7. ROHS COMPLIANT



**FOR INFORMATION ONLY:
DO NOT MANUFACTURE
PARTS TO THIS DRAWING**

SPECIFICATIONS SUBJECT TO CHANGE WITHOUT NOTICE
DIMENSIONS ARE FOR REFERENCE ONLY

| | S1 | S2 |  Edmund Optics® | | | |
|--------------------|----------------------|----------------------|--|--------|--|--|
| SHAPE | PLANO | PLANO |  | TITLE | Ø38.1mm x 6.35mm 1080nm N-BK7 LASER WINDOW | |
| SURFACE QUALITY | 10-5 | 10-5 | | DWG NO | 11395 | |
| SURFACE FLATNESS | λ/10 | λ/10 | | | | |
| MIN CLEAR APERTURE | Ø34.29 | Ø34.29 | | | | |
| BEVEL | PROTECTIVE AS NEEDED | PROTECTIVE AS NEEDED | ALL DIMS IN | mm | SHEET 1 OF 1 | |