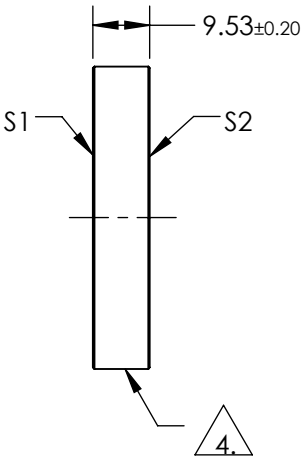
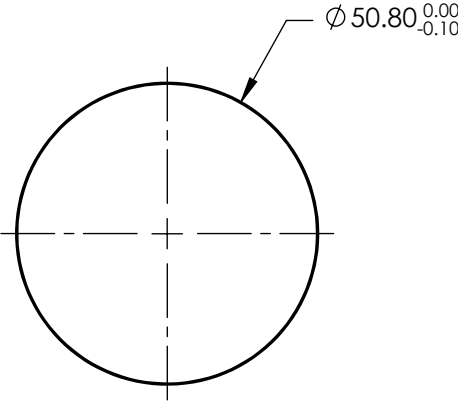


NOTES:

- 1. SUBSTRATE:  
FUSED SILICA
- 2. S2 TO BE PARALLEL TO S1 TO WITHIN <3 ARCMIN
- 3. COATING (APPLY ACROSS COATING APERTURE)  
S1: Dielectric Mirror (750-1100nm)  
R(AVG) >98% @ 750 - 1100nm (0 - 45°)  
R(AVG) >99% @ 750 - 1100nm (0°)  
  
DAMANGE THRESHOLD,  
PULSED: 1 J/cm² @ 1064nm, 20ns, 20Hz
- S2: NONE
- 4. FINE GROUND SURFACE
- 5. CLEAR APERTURE AND COATING APERTURE ARE CENTERED ON SURFACE
- 6. SURFACE QUALITY SPECIFICATIONS APPLY ACROSS CLEAR APERTURE
- 7. ROHS: COMPLIANT



**FOR INFORMATION ONLY:  
DO NOT MANUFACTURE  
PARTS TO THIS DRAWING**

SPECIFICATIONS SUBJECT TO CHANGE WITHOUT NOTICE  
DIMENSIONS ARE FOR REFERENCE ONLY

	S1	S2	<div><div><div><div><div></div><div>THIRD ANGLE PROJECTION</div></div><div></div></div><div>ALL DIMS INmm</div><div><div><div><div>EO<sup>®</sup></div><div>Edmund Optics<sup>®</sup></div></div><div>TITLE</div><div>50.8mm DIA. 750 - 1100nm BROADBAND λ/10 MIRROR</div><div>DWG NO</div><div>39227</div><div>SHEET 1 OF 1</div></div></div></div></div>			
SHAPE	PLANO	PLANO				
SURFACE QUALITY	20-10	COMMERCIAL POLISH				
SURFACE FLATNESS	0.10 WAVE	N/A				
CLEAR APERTURE	Ø45.72	N/A				
COATING APERTURE	Ø45.72	N/A				
BEVEL	PROTECTIVE AS NEEDED	PROTECTIVE AS NEEDED				