

NOTES:

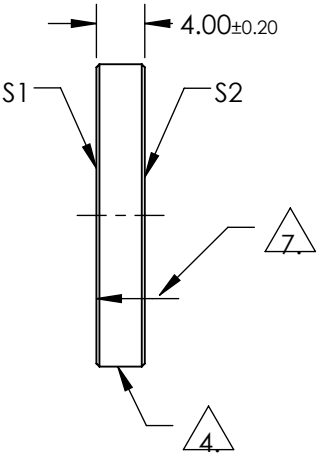
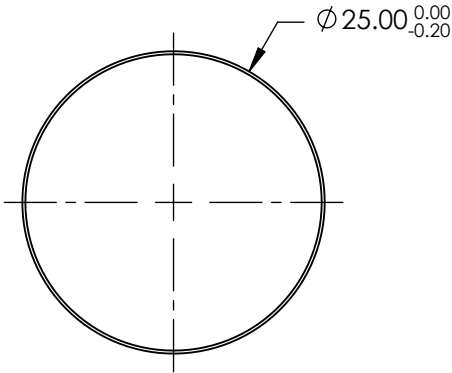
- 1. SUBSTRATE:  
ZERODUR
- 2. S2 TO BE PARALLEL TO S1 TO WITHIN <30 ARCSEC
- 3. COATING (APPLY ACROSS COATING APERTURE)  
S1: PROTECTED GOLD  
R(AVG) > 96% FROM 700-2000nm @ 0° AOI  
R(AVG) > 96% FROM 2000-10000nm @ 0° AOI  
S2: NONE

4. FINE GROUND SURFACE

- 5. CLEAR APERTURE AND COATING APERTURE ARE CENTERED ON SURFACE
- 6. SURFACE QUALITY SPECIFICATIONS APPLY ACROSS CLEAR APERTURE

7. ARROW ON EDGE POINTS TOWARDS 1/10TH WAVE SURFACE S1

- 8. ROHS: COMPLIANT



**FOR INFORMATION ONLY:  
DO NOT MANUFACTURE  
PARTS TO THIS DRAWING**

SPECIFICATIONS SUBJECT TO CHANGE WITHOUT NOTICE  
DIMENSIONS ARE FOR REFERENCE ONLY

	S1	S2
SHAPE	PLANO	PLANO
SURFACE QUALITY	20-10	COMMERCIAL POLISH
SURFACE FLATNESS	0.10 WAVE	N/A
CLEAR APERTURE	Ø22.50	N/A
COATING APERTURE	Ø24.00	N/A
BEVEL	PROTECTIVE AS NEEDED	PROTECTIVE AS NEEDED



ALL DIMS IN

mm



Edmund Optics®

TITLE

MIRROR 1/10 WV ZDUR GOLD 25 DIA

DWG NO

39866

SHEET  
1 OF 1