

NOTES:

- 1. SUBSTRATE
Fused Silica
- 2. COATING (APPLY ACROSS CLEAR APERTURE)
S1: P-POLARIZATION TRANSMISSION EFFICIENCY: >98%
EXTINCTION RATIO: 10000:1

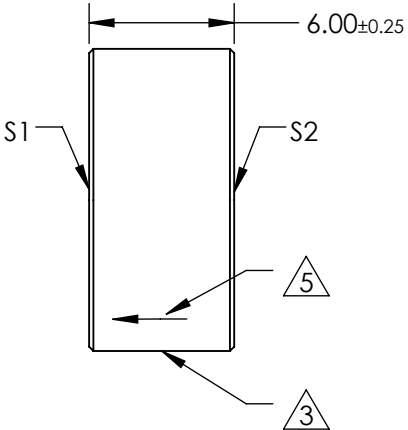
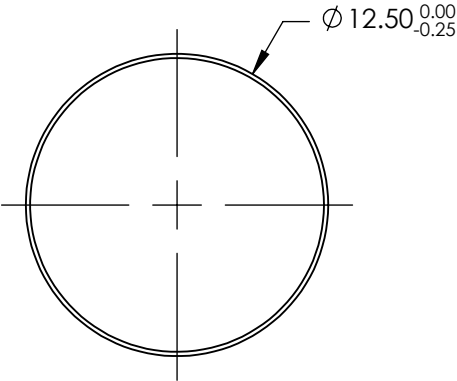
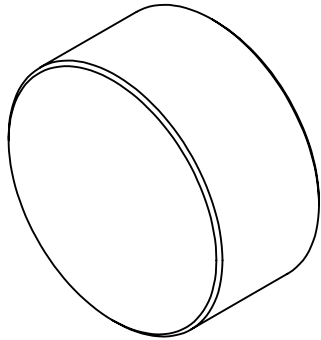
Damage Threshold, Pulsed:
2 J/cm2 @ 532nm, 10ns, S or P Polarization

3 FINE GROUND SURFACE

- 4. POWER, IRREGULARITY, SURFACE QUALITY, AND COATING SPECIFICATIONS APPLY ACROSS CLEAR APERTURE

5 APPLY ARROW ON EDGE WITH PENCIL OR PERMANENT INK TOWARDS S1

- 6. DESIGN WAVELENGTH: 633nm
- 7. RoHS: COMPLIANT



FOR INFORMATION ONLY:
DO NOT MANUFACTURE
PARTS TO THIS DRAWING

SPECIFICATIONS SUBJECT TO CHANGE WITHOUT NOTICE
DIMENSIONS ARE FOR REFERENCE ONLY

	S1	S2
TRANSMITTED WAVEFRONT	$\lambda/4$ @ 633nm	$\lambda/4$ @ 633nm
ANGLE OF INCIDENCE (°)	45 ±2	45 ±2
SHAPE	PLANO	PLANO
SURFACE QUALITY	40-20	40-20
CLEAR APERTURE	Ø11.25	Ø11.25
BEVEL	PROTECTIVE AS NEEDED	PROTECTIVE AS NEEDED



ALL DIMS IN mm

Edmund Optics

TITLE 633nm, 12.5mm DIAMETER, THIN-FILM LASER LINE POLARIZERS

DWG NO 86712

SHEET 1 OF 1