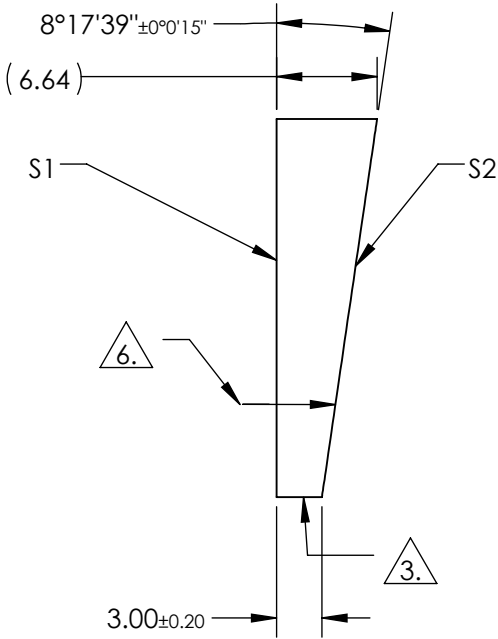
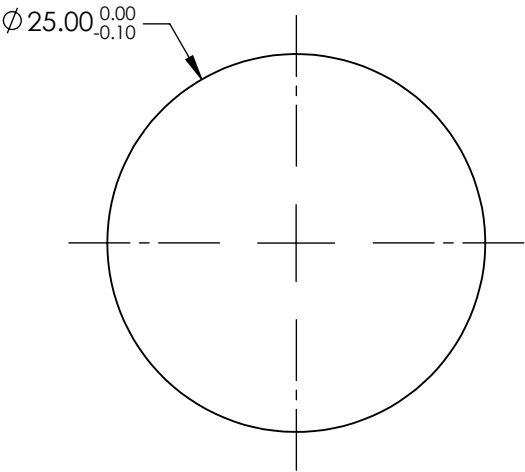


NOTES:

1. SUBSTRATE:
FUSED SILICA
2. COATING (APPLY ACROSS COATING APERTURE)
- S1 & S2: 1064nm Laser AR Coating
R(ABS) < 0.25% @ 1064nm @ 0° AOI
- DAMAGE THRESHOLD,
PULSED: 15J/cm² @ 20ns, 20Hz @ 1064nm
3. FINE GRIND SURFACE
4. POWER, IRREGULARITY, AND SURFACE QUALITY
SPECIFICATIONS APPLY ACROSS CLEAR APERTURE
5. IMAGE ORIENTATION: BEAM DEVIATION
6. APPLY ARROW ON EDGE WITH PENCIL OR PERMANENT INK
POINTING TOWARDS TITLTED SURFACE S2
7. ROHS COMPLIANT



**FOR INFORMATION ONLY:
DO NOT MANUFACTURE
PARTS TO THIS DRAWING**

	S1	S2
SHAPE	PLANO	PLANO
SURFACE QUALITY	20-10	20-10
MIN CLEAR APERTURE	Ø22.5	Ø22.5
MIN COATING APERTURE	Ø22.5	Ø22.5
POWER AT 632.8nm	0.5 RINGS	0.5 RINGS
IRREGULARITY AT 632.8nm	0.2 RINGS	0.2 RINGS
BEVEL	PROTECTIVE AS NEEDED	PROTECTIVE AS NEEDED

SPECIFICATIONS SUBJECT TO CHANGE WITHOUT NOTICE
DIMENSIONS ARE FOR REFERENCE ONLY

Edmund Optics®



THIRD ANGLE
PROJECTION

TITLE

PRISM WEDGE FS 4 DEG 25mm 1064nm

ALL DIMS IN

mm

DWG NO

39135

SHEET
1 OF 1