

NOTES:

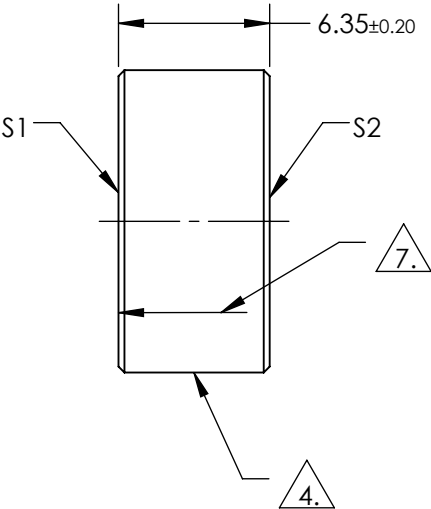
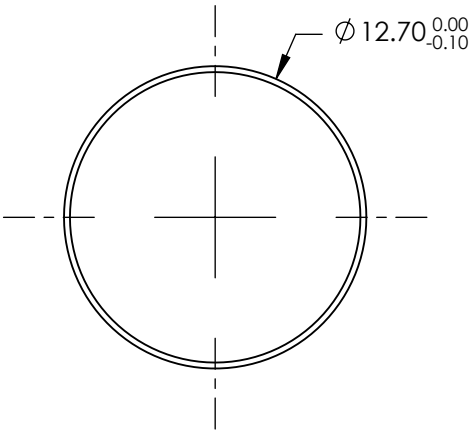
1. SUBSTRATE
FUSED SILICA
2. SURFACE S2 TO BE PARALLEL TO SURFACE S1 TO WITHIN <3 ARCMIN
3. COATING (APPLY ACROSS COATING APERTURE):

S1: 343 HR Coating
R (ABS) > 99.80% @ 343nm @ 0-45° AOI

DAMAGE THRESHOLD,
PULSED: 5 J/cm², 20ns, 20Hz @ 343nm
CW: 1MW/cm² @ 343nm

S2: NONE

4. FINE GRIND SURFACE
5. POWER, IRREGULARITY, AND SURFACE QUALITY SPECIFICATIONS APPLY
ACROSS CLEAR APERTURE
6. CLEAR APERTURE AND COATING APERTURE ARE CENTERED ON SURFACES
7. APPLY ARROW ON EDGE WITH LASER ETCH, PENCIL, OR PERMANENT INK
POINTING TOWARDS SURFACE S1




**FOR INFORMATION ONLY:
DO NOT MANUFACTURE
PARTS TO THIS DRAWING**

SPECIFICATIONS SUBJECT TO CHANGE WITHOUT NOTICE
DIMENSIONS ARE FOR REFERENCE ONLY

	S1	S2
SHAPE	PLANO	PLANO
SURFACE QUALITY	10-5	COMMERCIAL POLISH
SURFACE FLATNESS	0.10 WAVE	N/A
MIN CLEAR APERTURE	Ø11.43	N/A
MIN COATING APERTURE	Ø11.43	N/A
BEVEL	PROTECTIVE AS NEEDED	PROTECTIVE AS NEEDED

THIRD ANGLE PROJECTION	
ALL DIMS IN	mm

 Edmund Optics®			
TITLE		Ø12.7mm x 6.35mm, 343nm, Yb:YAG MIRROR 0-45° AOI	
DWG NO		38851	SHEET 1 OF 1