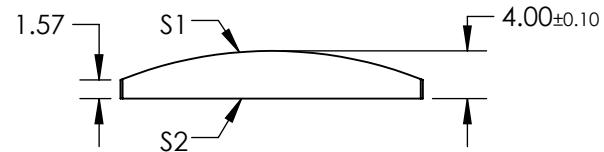
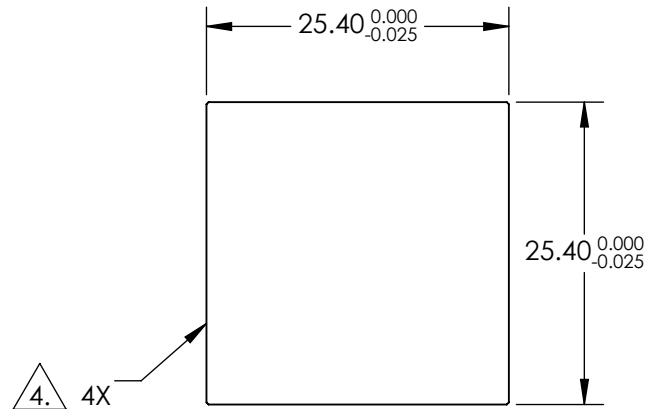
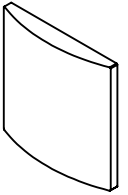


NOTES:

1. SUBSTRATE  
UV GRADE FUSED SILICA
2. CENTERING TOLERANCE:  
PLANO AXIS WEDGE: <3 ARCMIN  
POWER AXIS WEDGE: <3 ARCMIN  
AXIAL TWIST: <3 ARCMIN
3. COATING (APPLY ACROSS COATING APERTURE)  
S1 & S2: 532nm AR Coated  
R(ABS) < 0.25% @ 532nm @ 0° AOI  
  
DAMAGE THRESHOLD  
PULSED: 10 J/cm², 20ns, 20 Hz @ 532nm

4. FINE GROUND SURFACE


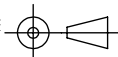
5. RoHS COMPLIANT



**FOR INFORMATION ONLY:  
DO NOT MANUFACTURE  
PARTS TO THIS DRAWING**

	S1	S2
SHAPE	CONVEX	PLANO
RADIUS	34.39	INFINITY
SURFACE QUALITY	20 - 10	20 - 10
CLEAR APERTURE	22.86 X 22.86	22.86 X 22.86
COATING APERTURE	24.40 x 24.40	24.40 x 24.40
POWER AT 632.8nm	1.50 WAVES	1.50 WAVES
IRREGULARITY AT 632.8nm	0.25 WAVES	0.25 WAVES
BEVEL	PROTECTIVE AS NEEDED	PROTECTIVE AS NEEDED

SPECIFICATIONS SUBJECT TO CHANGE WITHOUT NOTICE  
DIMENSIONS ARE FOR REFERENCE ONLY

EFL	75.00	 <b>Edmund Optics®</b>	
BFL	72.26		
THIRD ANGLE PROJECTION		TITLE	BEAM SHAPING CYLINDER LENS, FUSED SILICA, 25.4mm SQ X 25.4 x 25.4mm EFL, AR COATED
ALL DIMS IN	mm	DWG NO	37593
			SHEET 1 OF 1