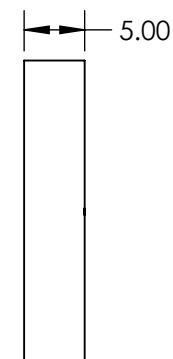
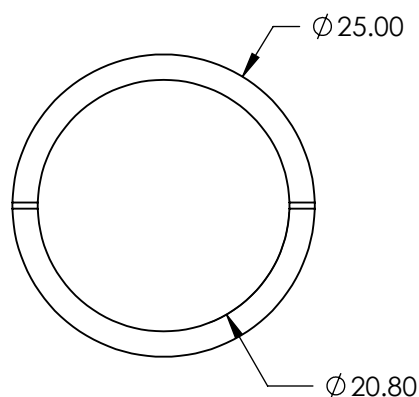
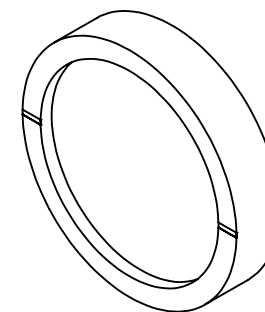


NOTES:

1. SUBSTRATE: Soda Lime Float Glass
2. CONSTRUCTION: Nanoparticle
3. CONTRAST:
 - > 1,000:1 (1500-5000nm)
 - > 10,000:1 (2000-4500nm)
4. BEAM DEVIATION: < 1 ARCMIN
5. MINIMUM TRANSMISSION (%):
 - 35 (1500-5000nm)
 - 65 (2000-4500nm)
6. LASER DAMAGE THRESHOLD
 - 1 W/cm² FOR CONTINUOUS BLOCK
 - 5 W/cm² FOR CONTINUOUS PASS
7. TRANSMITTED WAVEFRONT DISTORTION:
 - < $\lambda/4$ OVER A Ø10mm INSPECTION AREA
8. OPERATING TEMPERATURE (°C):
 - 20 to +120

**FOR INFORMATION ONLY:
DO NOT MANUFACTURE
PARTS TO THIS DRAWING**



SPECIFICATIONS SUBJECT TO CHANGE WITHOUT NOTICE
DIMENSIONS ARE FOR REFERENCE ONLY

WAVELENGTH RANGE (nm)	1500 - 5000
EXTINCTION RATIO	10000:1
SURFACE QUALITY	60-40
ACCEPTANCE ANGLE (°)	±20
POLARIZATION AXIS MARK (%)	±2
RoHS	COMPLIANT



ALL DIMS IN

mm



Edmund Optics®

TITLE

25mm Diameter Mid-Wave Infrared Polarizer

DWG NO

85264

SHEET
1 OF 1