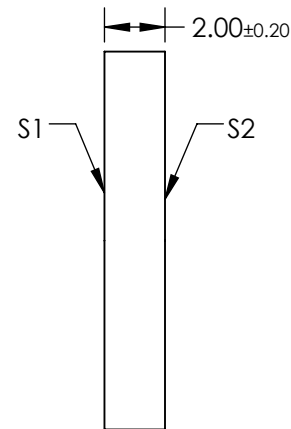
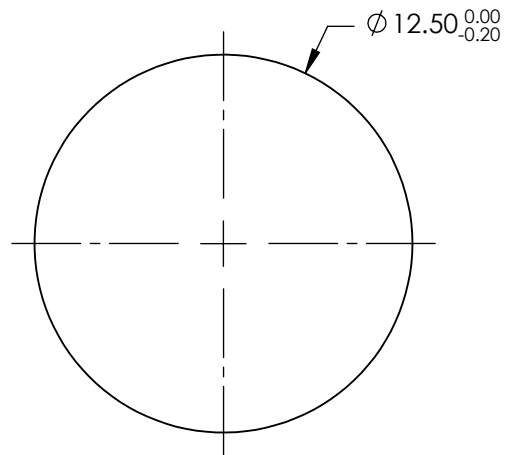
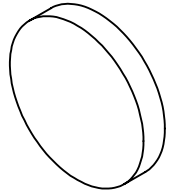


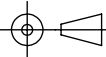

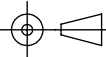
NOTES:

1. SUBSTRATE: B270
2. COATING (APPLY ACROSS COATING APERTURE)
S1 &S2: UNCOATED
3. CONSTRUCTION: DICHROIC
4. THE POLARIZER CONSISTS OF A POLYMER POLARIZATION FILM CEMENTED BETWEEN TWO PIECES OF OPTICAL GLASS
5. ROHS: COMPLIANT



**FOR INFORMATION ONLY:
DO NOT MANUFACTURE
PARTS TO THIS DRAWING**

SPECIFICATIONS SUBJECT TO CHANGE WITHOUT NOTICE
DIMENSIONS ARE FOR REFERENCE ONLY

REV. A	VALUE			 Edmund Optics®	
WAVELENGTH RANGE (nm)	1000 - 2000				
EXTINCTION RATIO	>1000:1			TITLE Ø12.5mm, 1000-2000nm, NIR LINEAR POLARIZER	
TRANSMISSION	33%				
		ALL DIMS IN	mm	DWG NO	48887
				SHEET 1 OF 1	