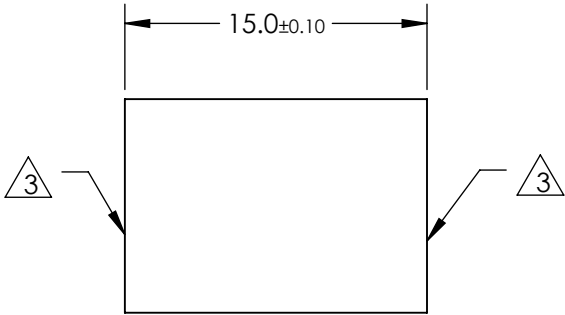
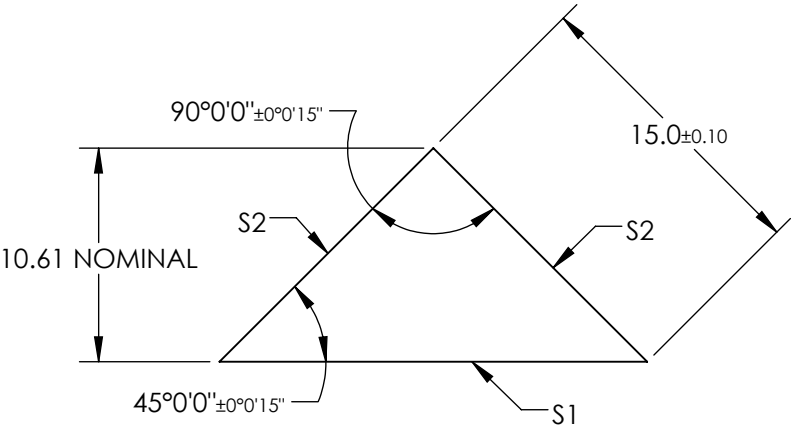


NOTES:

- 1. SUBSTRATE: FUSED SILICA
- 2. COATING (APPLY ACROSS CLEAR APERTURE)
 - S1: NONE
 - S2: 1064nm Laser AR Coating
 - R(ABS) < 0.25% @ 1064nm @ 0° AOI
- DAMAGE THRESHOLD
- PULSED: 15J/cm² @ 20ns, 20Hz @ 1064nm

3 FINE GRIND SURFACE

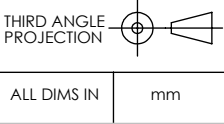
- 4. ROHS COMPLIANT




**FOR INFORMATION ONLY:
DO NOT MANUFACTURE
PARTS TO THIS DRAWING**

SPECIFICATIONS SUBJECT TO CHANGE WITHOUT NOTICE
DIMENSIONS ARE FOR REFERENCE ONLY

REV. A	S1	S2
SHAPE	PLANO	PLANO
SURFACE QUALITY	20-10	20-10
CLEAR APERTURE	19.08 x 13.50	Ø13.50
SURFACE FLATNESS	λ/20	λ/20
BEVEL	PROTECTIVE AS NEEDED	PROTECTIVE AS NEEDED



 Edmund Optics®	
TITLE	15mm 1/20 WV 1064nm AR CTD HT RA FS PRISM
DWG NO	37637
ALL DIMS IN	mm
SHEET 1 OF 1	