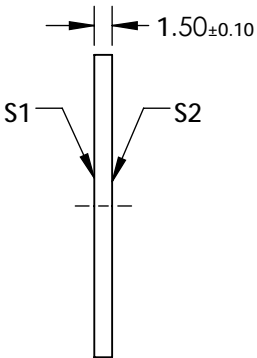
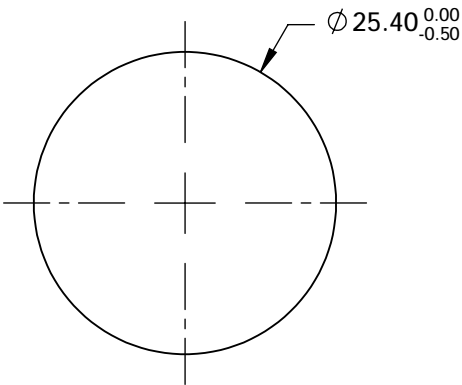
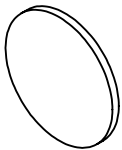


- NOTES:
- 1. SUBSTRATE MATERIAL:
FUSED SILICA
 - 2. SURFACE S1 TO BE PARALLEL TO SURFACE S2 TO WITHIN <3 ARCMIN
 - 3. COATING (APPLY ACROSS COATING APERTURE)

S1: Square Aluminum (AlMgF2) Apertures
R: 30±5% @ 250 - 2000nm @ 45° AOI
T: 70±5% @ 250 - 2000nm @ 45° AOI

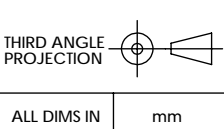
S2: NONE
 - 4. POLKA DOT CENTER TO CENTER SPACING : 0.15mm
POLKA DOT MINIMUM APERTURE: 2mm
 - 5. ROHS : COMPLIANT



FOR INFORMATION ONLY:
DO NOT MANUFACTURE
PARTS TO THIS DRAWING

SPECIFICATIONS SUBJECT TO CHANGE WITHOUT NOTICE
DIMENSIONS ARE FOR REFERENCE ONLY

	S1	S2
SHAPE	PLANO	PLANO
SURFACE QUALITY	80-50	80-50
CLEAR APERTURE	90%	90%
BEVEL	PROTECTIVE AS NEEDED	PROTECTIVE AS NEEDED



EO® **Edmund Optics®**

TITLE	BS POLKA-DOT 30/70 25.4mm DIA		
DWG NO	47604	SHEET	1 OF 1