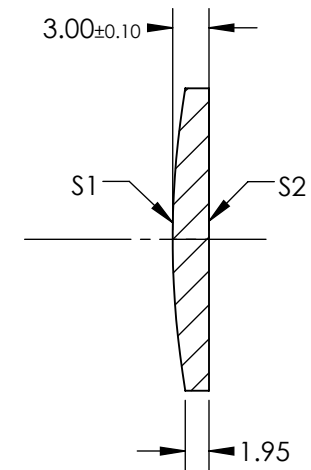
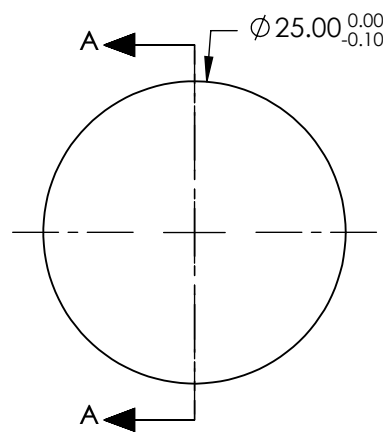


NOTES:


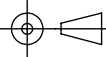
- 1. SUBSTRATE: GERMANIUM (GE)
- 2. COATING (APPLY ACROSS COATING APERTURE)
S1: R(avg) <5.0% @ 3 - 12µm
S2: R(avg) <5.0% @ 3 - 12µm
- 3. EDGES DIAMOND TURNED
- 4. CENTERING: <3 ARCMIN
- 5. RoHS COMPLIANT



SECTION A-A

**FOR INFORMATION ONLY:
DO NOT MANUFACTURE
PARTS TO THIS DRAWING**

SPECIFICATIONS SUBJECT TO CHANGE WITHOUT NOTICE
DIMENSIONS ARE FOR REFERENCE ONLY

	S1	S2	EFL @ 10.6µm	25	 Edmund Optics®		
SHAPE	CONVEX	PLANO	BFL @ 10.6µm	24.25			
RADIUS	75.1	∞			TITLE	25mm DIA. X 25mm FL, 3 - 12µm COATED, GE PLANO-CONVEX LENS	
SURFACE QUALITY	60-40	60-40					
CLEAR APERTURE	Ø24	Ø24	ALL DIMS IN		DWG NO	87943	SHEET 1 OF 1
BEVEL	PROTECTIVE AS NEEDED	PROTECTIVE AS NEEDED					