

NOTES:

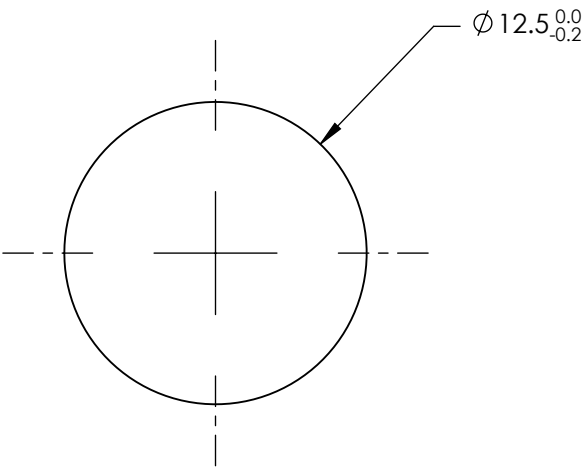
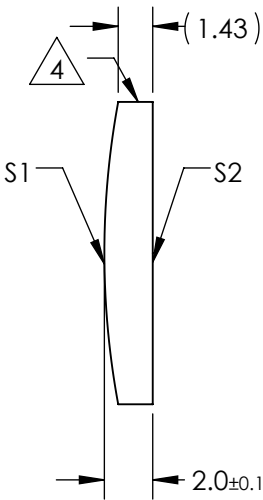
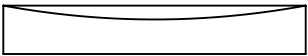
- 1. SUBSTRATE MATERIAL:
FUSED SILICA
- 2. COATING (APPLY ACROSS CLEAR APERTURE)

S1 & S2: NONE

- 3. WEDGE TOLERANCE: <15 arcmin


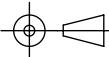
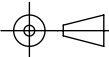
4. FINE GROUND SURFACE

- 5. POWER, IRREGULARITY, AND SURFACE QUALITY
SPECIFICAIONS APPLY ACROSS CLEAR APERTURE
- 6. RoHS COMPLIANT



**FOR INFORMATION ONLY:
DO NOT MANUFACTURE
PARTS TO THIS DRAWING**

SPECIFICATIONS SUBJECT TO CHANGE WITHOUT NOTICE
DIMENSIONS ARE FOR REFERENCE ONLY

| | | | | | | | | | |
|------------------|---------------------|---------------------|--|-------|---|---|--------|-------|-----------------|
| REV. A | S1 | S2 |  Edmund Optics® | | | | | | |
| SHAPE | CONVEX | PLANO | | | | | | | |
| RADIUS | 34.39 | ∞ | | | | | | | |
| | | | EFL | 75 |  | | | | |
| | | | BFL | 73.63 | | | | | |
| SURFACE QUALITY | 40-20 | 40-20 |  | | TITLE | 12.5mm DIAMETER X 75mm FL UNCOATED, UV PCX CYLINDER LENS | | | |
| CLEAR APERTURE | Ø11.50 | Ø11.50 | | | ALL DIMS IN | mm | DWG NO | 68170 | SHEET 1 OF 1 |
| COATING APERTURE | Ø11.50 | Ø11.50 | | | | | | | |
| BEVEL | PROTECTED AS NEEDED | PROTECTED AS NEEDED | | | | | | | |