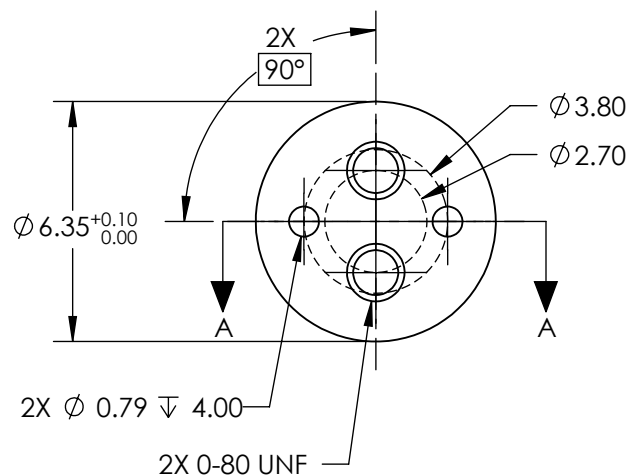
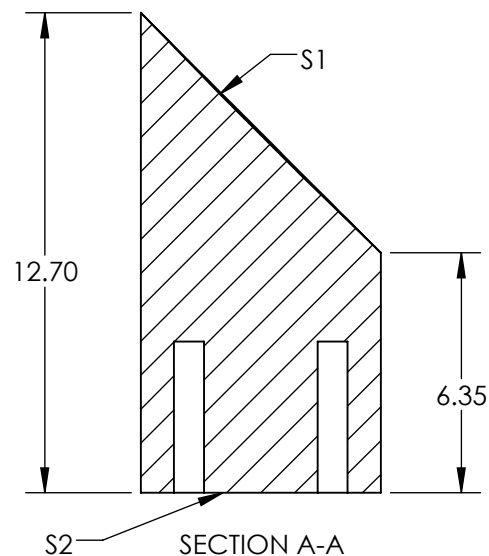
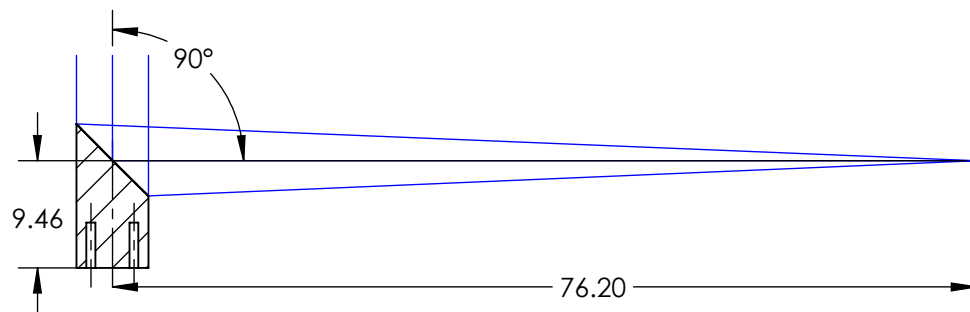


NOTES:

- SUBSTRATE MATERIAL:
ALUMINUM
- FINISH (EXCEPT SURFACE S1 & S2):
BLACK ANODIZED
- COATING (APPLY ACROSS CLEAR APERTURE)
S1: PROTECTED GOLD
R(AVG) >94% @ 0.7-0.8 μ m
R(AVG) >97% @ 0.8-2.0 μ m
R(AVG) >98% @ 2-12 μ m

SURFACE ROUGHNESS: <50 Å RMS
- FOCAL LENGTH TOLERANCE: $\pm 1\%$
- ROHS COMPLIANT

**FOR INFORMATION ONLY:
DO NOT MANUFACTURE
PARTS TO THIS DRAWING**



SPECIFICATIONS SUBJECT TO CHANGE WITHOUT NOTICE
DIMENSIONS ARE FOR REFERENCE ONLY

REV. A	S1
SHAPE	PARABOLIC
SURFACE FIGURE AT 632.8nm (RMS)	$\lambda/8$
CLEAR APERTURE	90%
BEVEL	PROTECTIVE AS NEEDED



ALL DIMS IN

mm



Edmund Optics®

TITLE

Ø6.35 X 76.2mm EFL, PROTECTED GOLD 50Å
OFF-AXIS PARABOLIC MIRROR

DWG NO

37298

SHEET
1 OF 1