

NOTES:

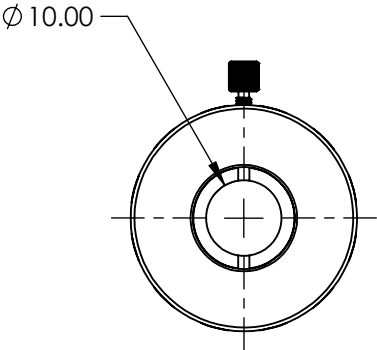
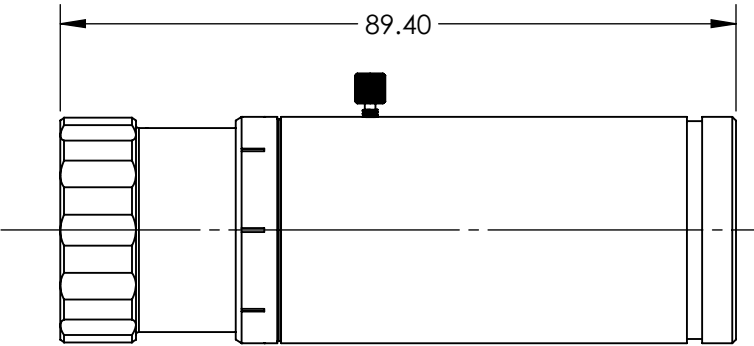
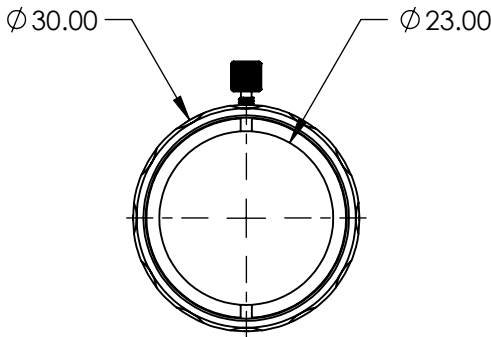
1. COATING (APPLY ACROSS COATING APERTURE):

BBAR & LASER V-COAT  
R(AVG): 0.1% @ 1940nm - 1950nm  
R(AVG): 0.5% @ 1900nm - 2100nm  
R(AVG): 0.25% @ 2000nm - 2100nm

2. MOUNTING THREAD:

INPUT: MALE M30 x 1  
OUTPUT: FEMALE M27 x 0.5

3. ROHS COMPLIANT



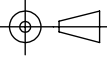
**FOR INFORMATION ONLY:  
DO NOT MANUFACTURE  
PARTS TO THIS DRAWING**

SPECIFICATIONS SUBJECT TO CHANGE WITHOUT NOTICE  
DIMENSIONS ARE FOR REFERENCE ONLY

**EO**® **Edmund Optics®**

DESIGN WAVELENGTH (nm)	1940
EXPANSION POWER	3X
TRANSMISSION, %	99 (NOMINAL)
TRANSMITTED WAVEFRONT, P-V	$\lambda/10$ FOR 5.5mm INPUT BEAM (NOMINAL, $\lambda$ = DWL)

THIRD ANGLE  
PROJECTION



ALL DIMS IN

mm

TITLE

3X 2 $\mu$ m LOW OH<sup>-</sup> CONTENT VEGA™  
BROADBAND BEAM EXPANDER

DWG NO

37341

SHEET  
1 OF 1