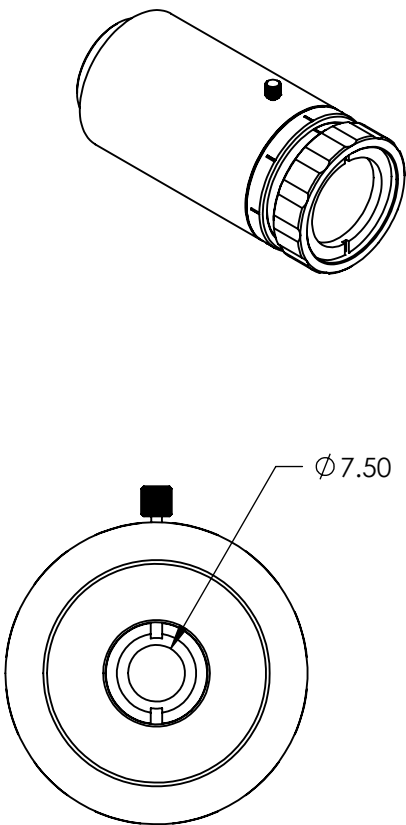
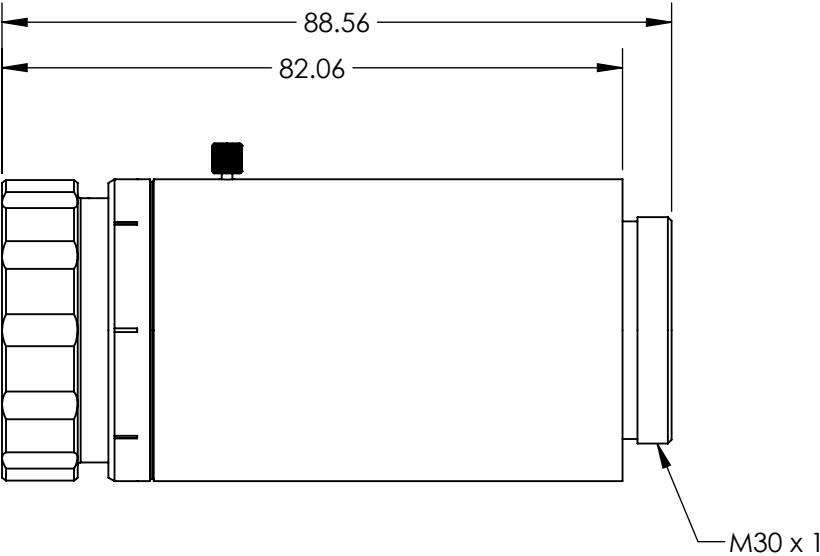
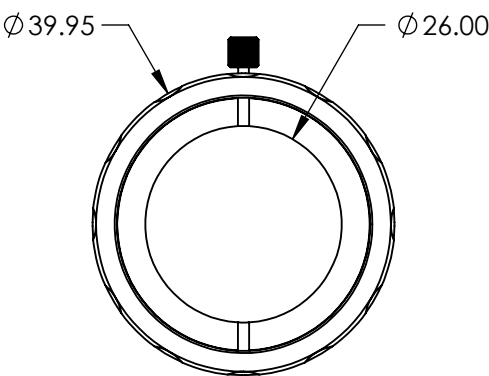


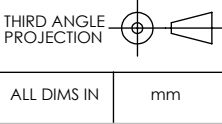
- NOTES:
- 1. COATING (APPLY ACROSS CLEAR APERTURE)  
LASER V-COAT  
 $R(ABS) \leq 0.25\% @ 266nm$
  - 2. RoHS: COMPLIANT



**FOR INFORMATION ONLY:  
DO NOT MANUFACTURE  
PARTS TO THIS DRAWING**

SPECIFICATIONS SUBJECT TO CHANGE WITHOUT NOTICE  
DIMENSIONS ARE FOR REFERENCE ONLY

DAMAGE THRESHOLD (PULSED)	1.5J/cm <sup>2</sup> @ 10ns, 20Hz, 266nm
DESIGN WAVELENGTH DWL (nm)	266
EXPANSION POWER	5X
TRANSMISSION (%)	> 99 (NOMINAL)
NOMINAL PERFORMANCE	<λ/10 FOR 2.8mm INPUT BEAM (NOMINAL)



 <b>Edmund Optics®</b>			
TITLE	5X, 266nm VEGAT™ Nd:YAG LASER LINE BEAM EXPANDER		
DWG NO	35100	SHEET 1 OF 1	