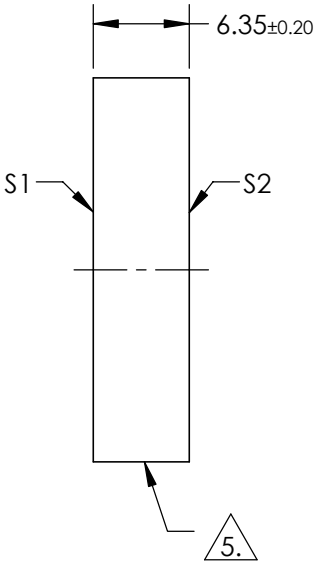
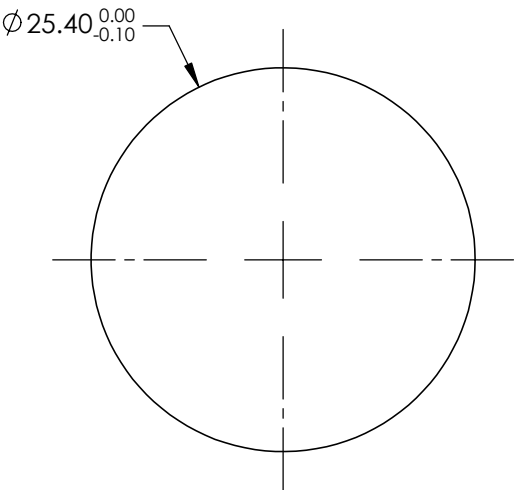


NOTES:

- 1. SUBSTRATE: FUSED SILICA
- 2. RoHS: COMPLIANT
- 3. SURFACE S2 TO BE PARALLEL TO SURFACE S1 TO WITHIN <3 ARCMIN
- 4. COATING (APPLY ACROSS COATING APERTURE)
S1: Rs(ABS) > 99.95% @ 1064nm @ 45° AOI


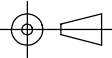
DAMAGE THRESHOLD,
PULSED: 15 J/cm² @ 1064nm, 20ns, 20Hz

5. FINE GRIND SURFACE



**FOR INFORMATION ONLY:
DO NOT MANUFACTURE
PARTS TO THIS DRAWING**

SPECIFICATIONS SUBJECT TO CHANGE WITHOUT NOTICE
DIMENSIONS ARE FOR REFERENCE ONLY

	S1	S2	 Edmund Optics®			
SHAPE	PLANO	PLANO		TITLE	1064nm, 45°, 25.4mm DIA., 6.35mm THICK, Nd:YAG IBS LASER LINE MIRROR	
SURFACE QUALITY	10-5	COMMERCIAL POLISH		DWG NO	34845	SHEET 1 OF 1
CLEAR APERTURE	Ø21.59	N/A				
BEVEL	PROTECTIVE AS NEEDED	PROTECTIVE AS NEEDED	ALL DIMS IN mm			