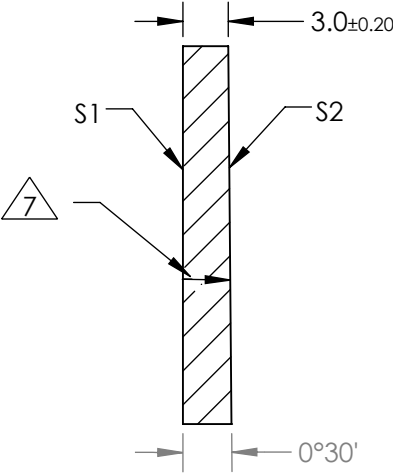
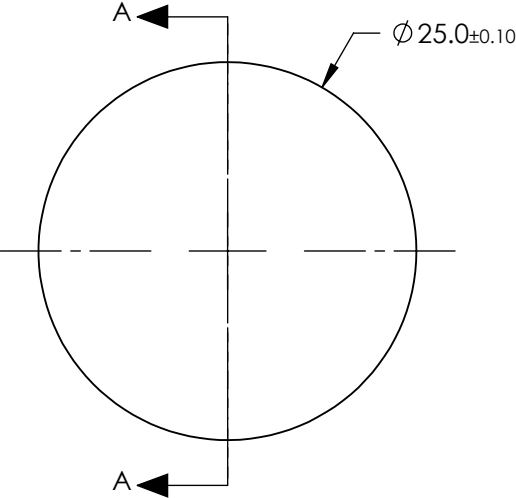


NOTES:

1. COATING(APPLY ACROSS COATING APERTURE)
- SPECIFICATIONS AT 45° AOI AND RANDOM POLARIZATION
- S1: R(abs): = 30.0% ± 5.0% @ 550nm
R(abs): = 30.0% ± 10.0% @ 400 - 700nm
T(abs): = 70.0% ± 5.0% @ 550nm
T(abs): = 70.0% ± 10.0% @ 400 - 700nm
- S2: R(abs): <= 2.0% @ 400 - 700nm
R(avg): <= 1.0% @ 400 - 700nm
2. SURFACE QUALITY SPECIFICATIONS APPLY ACROSS COATING APERTURES
3. RoHS COMPLIANT
4. ARROW ON EDGE OF PART INDICATES ANTI-REFLECTION COATED SIDE S2.

FOR INFORMATION ONLY:
DO NOT MANUFACTURE
PARTS TO THIS DRAWING



SECTION A-A

SPECIFICATIONS SUBJECT TO CHANGE WITHOUT NOTICE
DIMENSIONS ARE FOR REFERENCE ONLY

	S1	S2
SURFACE QUALITY	20 - 10	20 - 10
SURFACE FLATNESS	λ/10	λ/10
MINIMUM COATING APERTURE	Ø 21.25	Ø 21.25
BEVEL	PROTECTIVE AS NEEDED	PROTECTIVE AS NEEDED



ALL DIMS IN mm

Edmund Optics®

25mm DIAMETER 30R/70T, VIS WEDGED PLATE BEAMSPLITTER

DWG NO. 34412

SHEET 1 OF 1