

NOTES:

1. 3 M3x0.5 FLAT POINT STAINLESS STEEL SET SCREWS INCLUDED TO OPTIONALLY FIT 3 HOLES IN LOCK NUT, 120° APART.

2. INCLUDED WITH 33566.

FOR INFORMATION ONLY:
DO NOT MANUFACTURE
PARTS TO THIS DRAWING

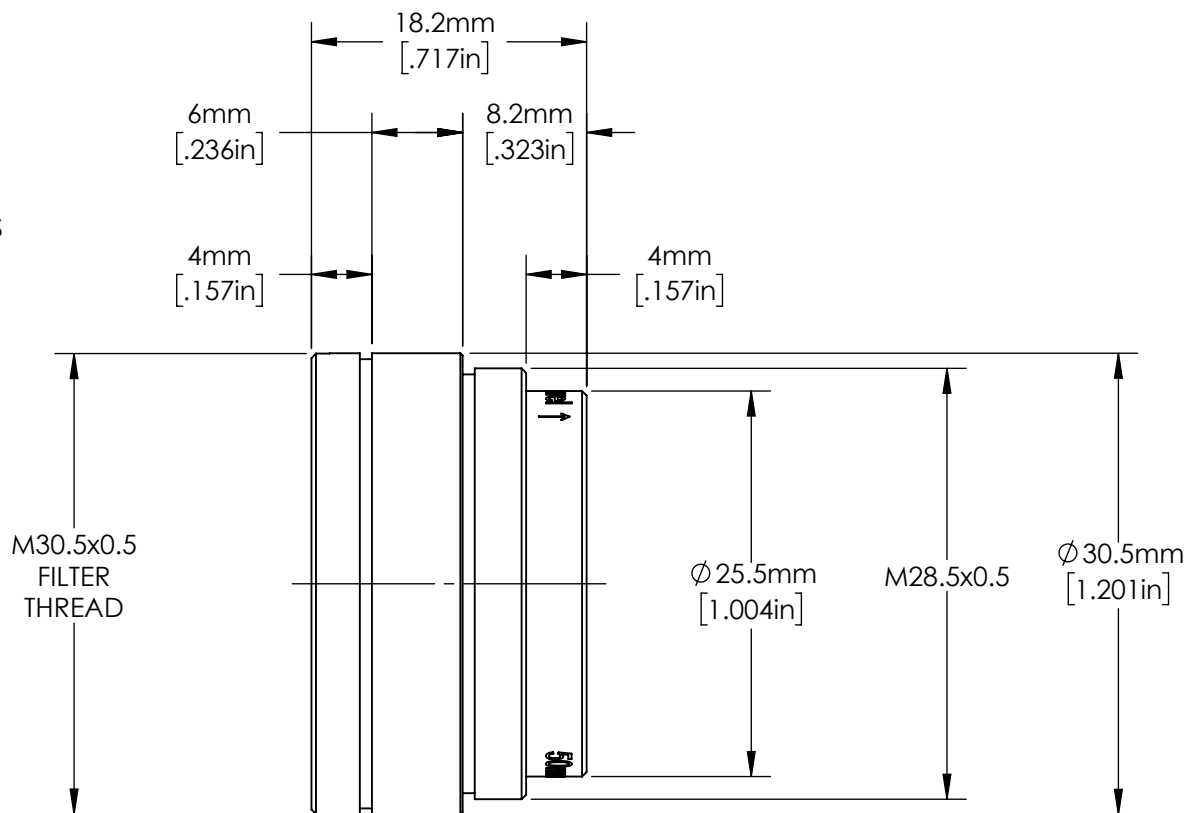
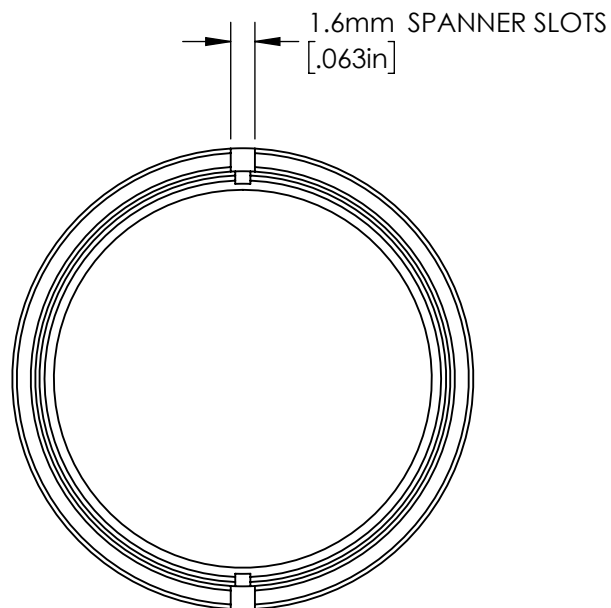
SPECIFICATIONS SUBJECT TO CHANGE
 WITHOUT NOTICE.
 DIMENSIONS ARE FOR REFERENCE ONLY.

Edmund Optics®

TITLE 50mm Cx Series Fixed Focal Length Lens

DWG NO 33566

SHEET
1 OF 6



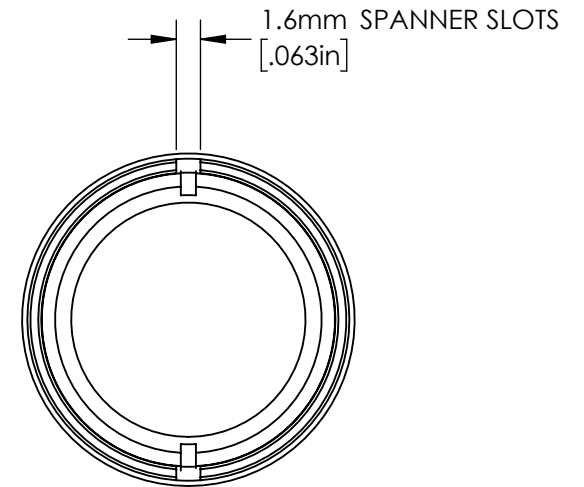
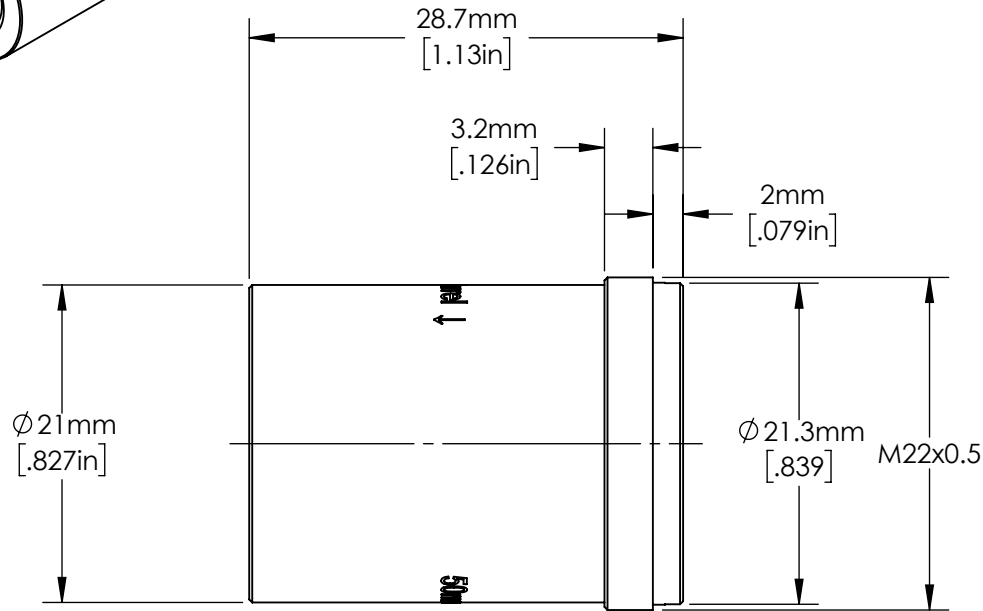
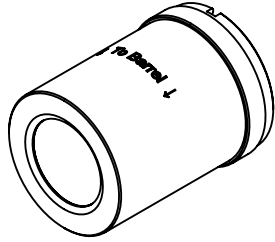
FOR INFORMATION ONLY:
DO NOT MANUFACTURE
PARTS TO THIS DRAWING

SPECIFICATIONS SUBJECT TO CHANGE
 WITHOUT NOTICE.
 DIMENSIONS ARE FOR REFERENCE ONLY.



Edmund Optics®

TITLE	FRONT ASSEMBLY OF 50mm Cx LENS		
DWG NO	33566		SHEET 2 OF 6

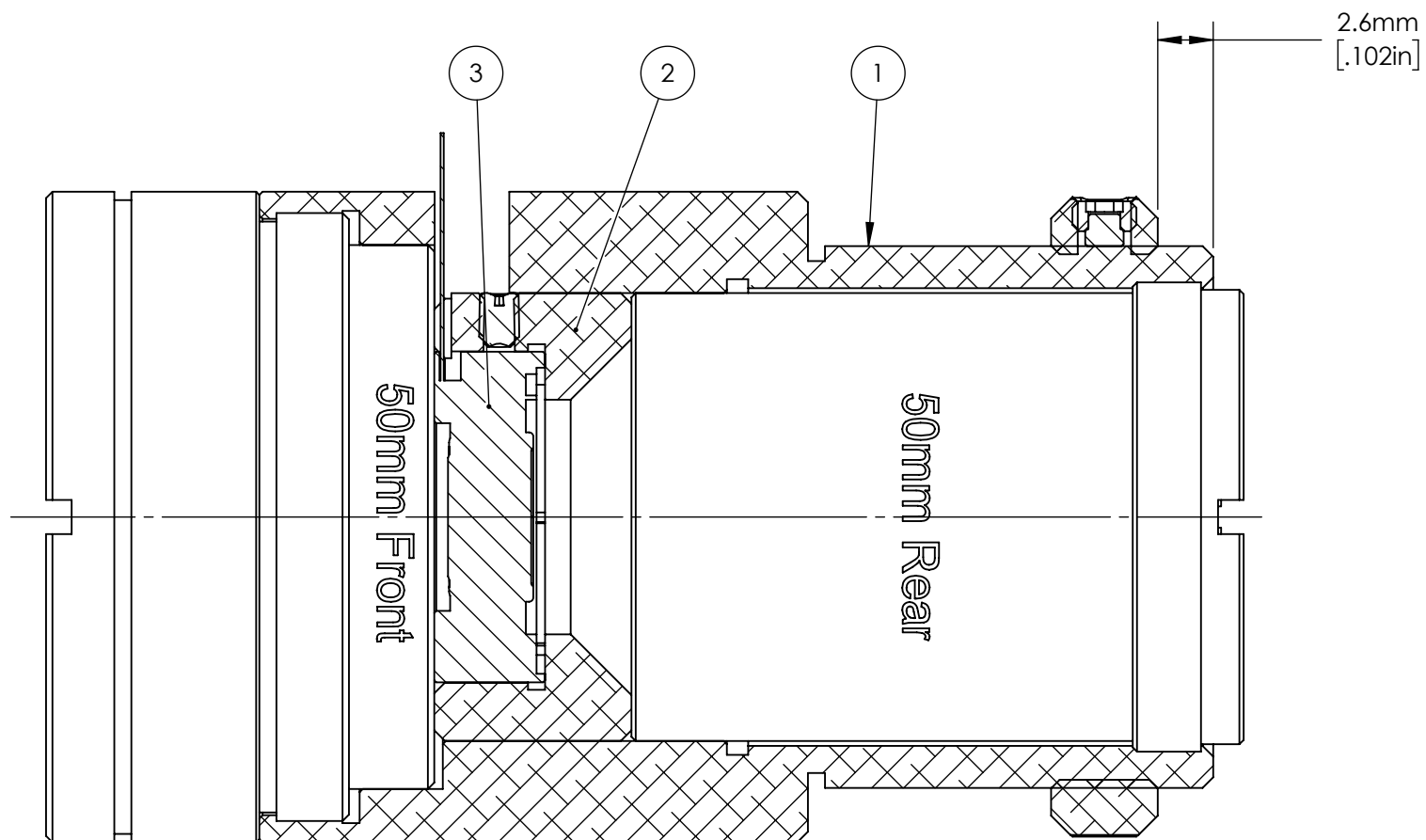


FOR INFORMATION ONLY:
DO NOT MANUFACTURE
PARTS TO THIS DRAWING

SPECIFICATIONS SUBJECT TO CHANGE
 WITHOUT NOTICE.
 DIMENSIONS ARE FOR REFERENCE ONLY.

Edmund Optics®

TITLE	REAR ASSEMBLY OF 50mm Cx LENS		
DWG NO	33566		SHEET 3 OF 6



NOTES:

1. EACH ITEM MAY BE PURCHASED SEPARATELY.

3	1	34283	LIQUID LENS ARCTIC 39N0 3.9mm APERTURE
2	1	33686	LIQUID LENS HOLDER FOR 50mm Cx LENS
1	1	33566	50mm Cx LENS
ITEM	QTY	PART NUMBER	DESCRIPTION

FOR INFORMATION ONLY:
DO NOT MANUFACTURE
PARTS TO THIS DRAWING

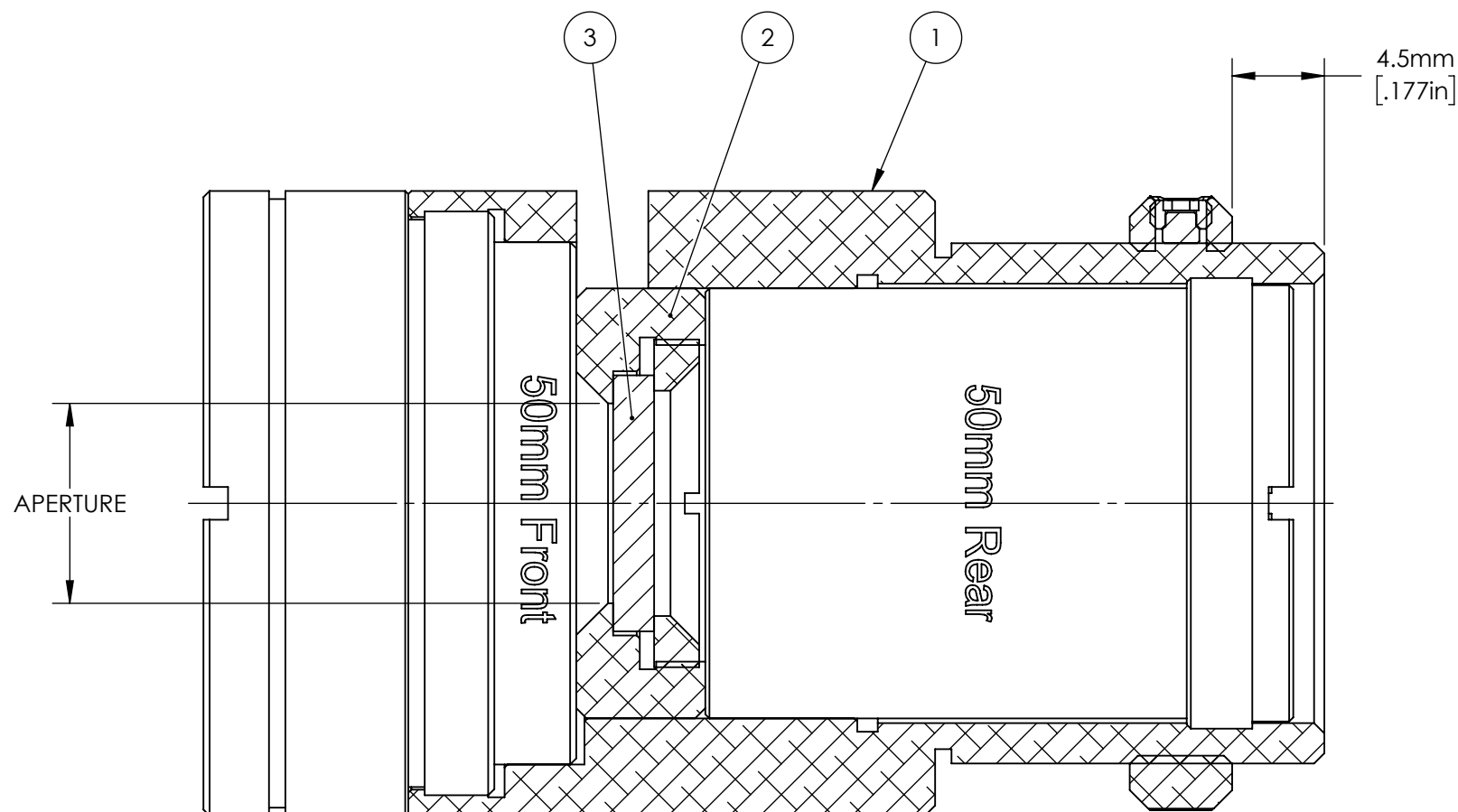
SPECIFICATIONS SUBJECT TO CHANGE
 WITHOUT NOTICE.
 DIMENSIONS ARE FOR REFERENCE ONLY.

Edmund Optics®

TITLE 50mm Cx LENS WITH LIQUID LENS

DWG NO 33566

SHEET
4 OF 6



NOTES:

1. CHOOSE THE STOCK NUMBER CORRESPONDING TO THE DESIRED APERTURE SIZE.
2. CHOOSE THE STOCK NUMBER OF THE DESIRED FILTER WHICH FITS.
3. EACH ITEM MAY BE PURCHASED SEPARATELY.

3	1	SEE NOTE 2	ANY 1.5mm OR 2mm THICK \varnothing 12.5mm FILTER
2	1	SEE NOTE 1	ANY FILTER MOUNT ASSEMBLY FOR 50mm LENS
1	1	33566	50mm Cx LENS
ITEM	QTY	PART NUMBER	DESCRIPTION

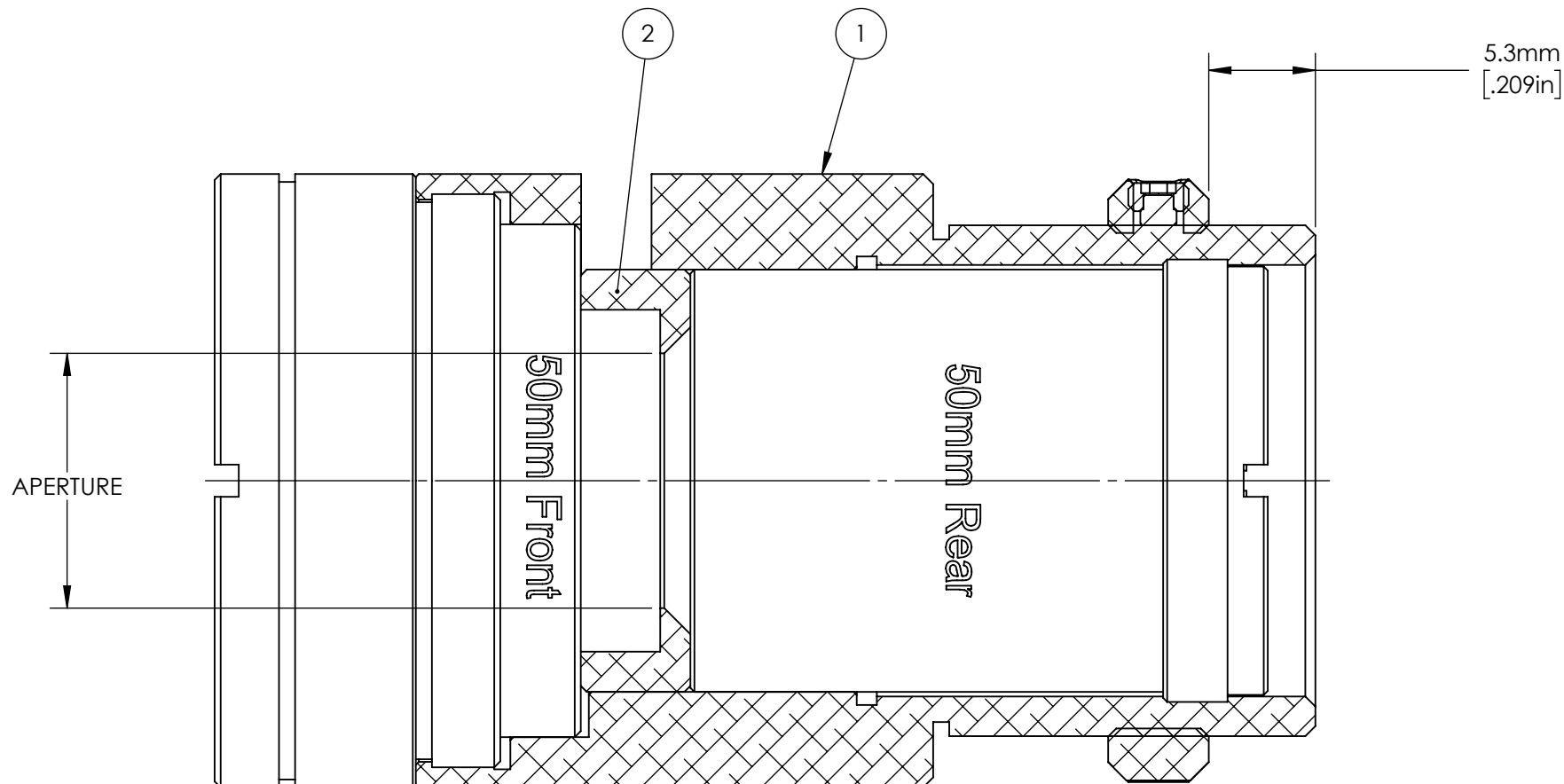
FOR INFORMATION ONLY:
**DO NOT MANUFACTURE
 PARTS TO THIS DRAWING**

SPECIFICATIONS SUBJECT TO CHANGE
 WITHOUT NOTICE.
 DIMENSIONS ARE FOR REFERENCE ONLY.



Edmund Optics®

TITLE	50mm Cx LENS WITH FILTER MOUNT ASSEMBLY		
DWG NO	33566		SHEET 5 OF 6



NOTES:

1. CHOOSE THE STOCK NUMBER CORRESPONDING TO THE DESIRED APERTURE SIZE.
2. EACH ITEM MAY BE PURCHASED SEPARATELY.

2	1	SEE NOTE 1	ANY APERTURE FOR 50mm Cx LENS
1	1	33566	50mm Cx LENS
ITEM	QTY	PART NUMBER	DESCRIPTION

FOR INFORMATION ONLY:
DO NOT MANUFACTURE
PARTS TO THIS DRAWING

SPECIFICATIONS SUBJECT TO CHANGE
 WITHOUT NOTICE.
 DIMENSIONS ARE FOR REFERENCE ONLY.



Edmund Optics®

TITLE	50mm LENS WITH APERTURE		
DWG NO	33566		SHEET 6 OF 6

