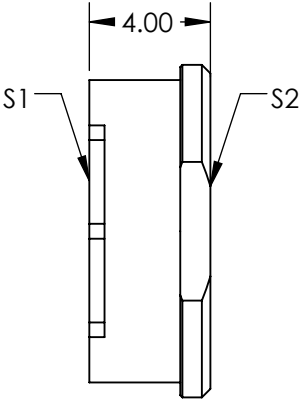
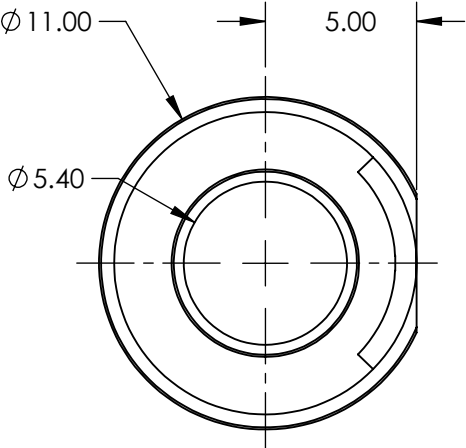
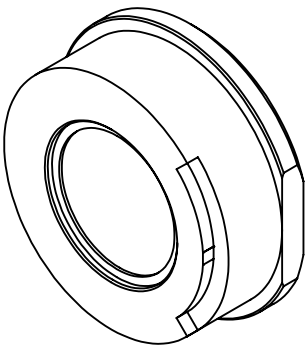


NOTES:

- 1. SUBSTRATE: LOW DISPERSION POLYMER
- 2. COATING: BBAR (420-900nm)
S1: Vis
S2: NONE
- 3. DESIGN WAVELENGTH: 420-900nm
- 4. RoHS: COMPLIANT



**FOR INFORMATION ONLY:
DO NOT MANUFACTURE
PARTS TO THIS DRAWING**

SPECIFICATIONS SUBJECT TO CHANGE WITHOUT NOTICE
DIMENSIONS ARE FOR REFERENCE ONLY

Edmund Optics®

REV. A	S1	S2	THIRD ANGLE PROJECTION		TITLE	FOCUS TUNABLE LENS 3mm CA 26dpt VIS	
CLEAR APERTURE	Ø3.0	Ø3.0	ALL DIMS IN	mm	DWG NO	37344	SHEET 1 OF 1