

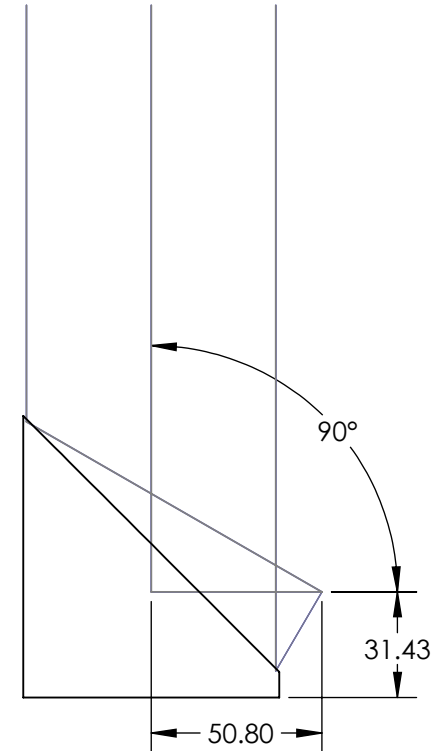
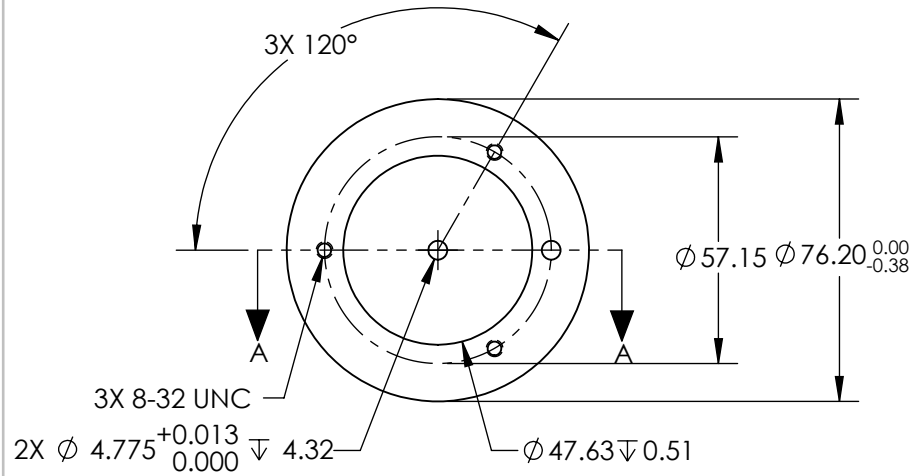
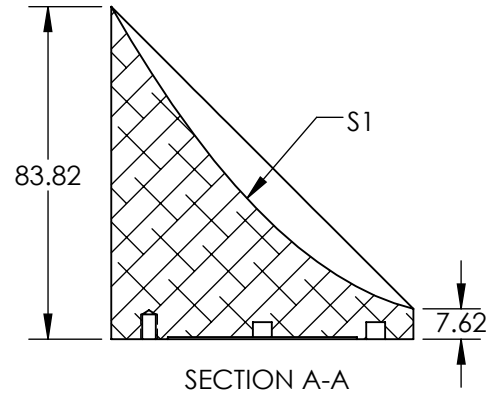
NOTES:

1. SUBSTRATE MATERIAL:
ALUMINUM
2. FINISH (EXCEPT SURFACE S1):
BLACK ANODIZED
3. COATING (APPLY ACROSS CLEAR APERTURE)
S1: SILVER WITH PROTECTIVE OVERCOAT
R(AVG) $\geq 98\%$ from 2 - 12 μm


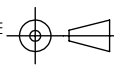
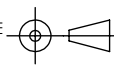
SURFACE ROUGHNESS: <100 Å RMS

4. FOCAL LENGTH TOLERANCE: $\pm 1\%$
5. ROHS COMPLIANT

**FOR INFORMATION ONLY:
DO NOT MANUFACTURE
PARTS TO THIS DRAWING**



SPECIFICATIONS SUBJECT TO CHANGE WITHOUT NOTICE
DIMENSIONS ARE FOR REFERENCE ONLY

REV. A	S1	EFL	50.80	 Edmund Optics®			
SHAPE	PARABOLIC	PFL	25.40				
REFLECTIVE WAVEFRONT DISTORTION AT 632.8nm (RMS)	3/2λ			TITLE	Ø76.2 X 50.8mm EFL 90° OAP PROTECTED SILVER MIRROR 100Å		
SURFACE FIGURE AT 632.8nm (RMS)	3/4λ						
CLEAR APERTURE	90%	ALL DIMS IN		DWG NO	36600	SHEET 1 OF 1	
BEVEL	PROTECTIVE AS NEEDED	mm					