

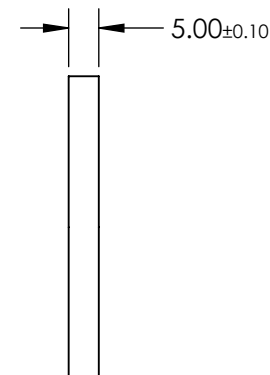
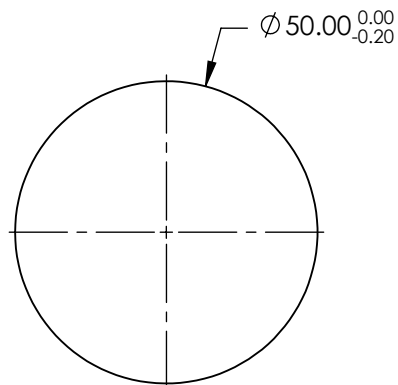
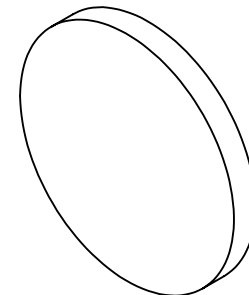
NOTES:

1. SUBSTRATE: FUSED SILICA
2. SURFACE S2 TO BE PARALLEL WITH SURFACE S1 TO WITHIN 5 arcsec
3. COATING (APPLY ACROSS COATING APERTURE)
S1: METALLIC N.D., OPTICAL DENSITY (abs) = 4 FROM 700 - 1100nm
S2: NONE


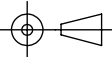
4. FINE GRIND SURFACE

5. POWER, IRREGULARITY, AND SURFACE QUALITY SPECIFICATIONS
APPLY ACROSS CLEAR APERTURE
6. TRANSMITTED WAVEFRONT DISTORTION P-V @ 632.8nm: $\leq 0.1 \lambda$
7. ROHS COMPLIANT

**FOR INFORMATION ONLY:
DO NOT MANUFACTURE
PARTS TO THIS DRAWING**



SPECIFICATIONS SUBJECT TO CHANGE WITHOUT NOTICE
DIMENSIONS ARE FOR REFERENCE ONLY

| | S1 | S2 |  Edmund Optics® | | | |
|------------------|---------------------|---------------------|---|--------|---------------------------------|--------------|
| SHAPE | PLANO | PLANO | | | | |
| SURFACE QUALITY | 40-20 | 40-20 | THIRD ANGLE PROJECTION  | TITLE | FILTER FS NIR ND REF Ø50mm 4 OD | |
| CLEAR APERTURE | Ø40 | Ø40 | | DWG NO | 36267 | SHEET 1 OF 1 |
| COATING APERTURE | Ø40 | Ø40 | | | | |
| BEVEL | PROTECTED AS NEEDED | PROTECTED AS NEEDED | ALL DIMS IN | mm | | |