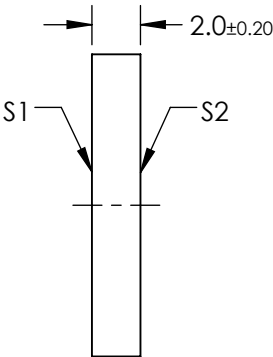
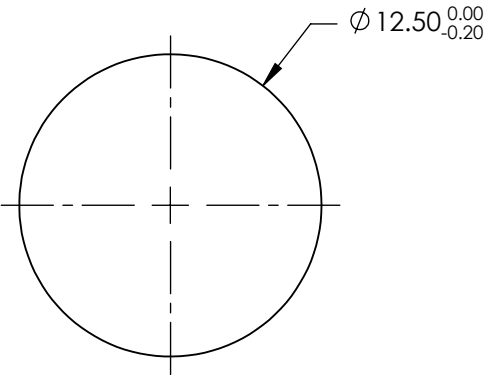
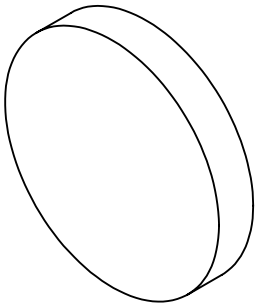


NOTES:

- 1. SUBSTRATE: SODA LIME FLOAT GLASS
- 2. COATING (APPLY ACROSS COATING APERTURE)

S1 & S2:  
EXTINCTION RATIO:  $T_p/T_s > 100000:1$  FROM 372 - 388nm  
TRANSMISSION:  $TP > 52\%$  FROM 372 - 388nm  
  
EXTINCTION RATIO:  $T_p/T_s > 10000:1$  FROM 369 - 390nm  
TRANSMISSION:  $TP > 52\%$  FROM 369 - 390nm  
  
EXTINCTION RATIO:  $T_p/T_s > 1000:1$  FROM 365 - 395nm  
TRANSMISSION:  $TP > 51\%$  FROM 365 - 395nm

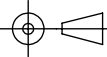
- 3. BEAM DEVIATION:  $< 1$  arcmin
- 4. WAVEFRONT DISTORTION:  $< 1/4$  WAVE @ 633nm
- 5. RoHS COMPLIANT



**FOR INFORMATION ONLY:  
DO NOT MANUFACTURE  
PARTS TO THIS DRAWING**

SPECIFICATIONS SUBJECT TO CHANGE WITHOUT NOTICE  
DIMENSIONS ARE FOR REFERENCE ONLY

**EO**® **Edmund Optics®**

THIRD ANGLE PROJECTION 		TITLE	Ø12.5mm, HIGH CONTRAST UV POLARIZER	
ALL DIMS IN	mm	DWG NO	36650	SHEET 1 OF 1