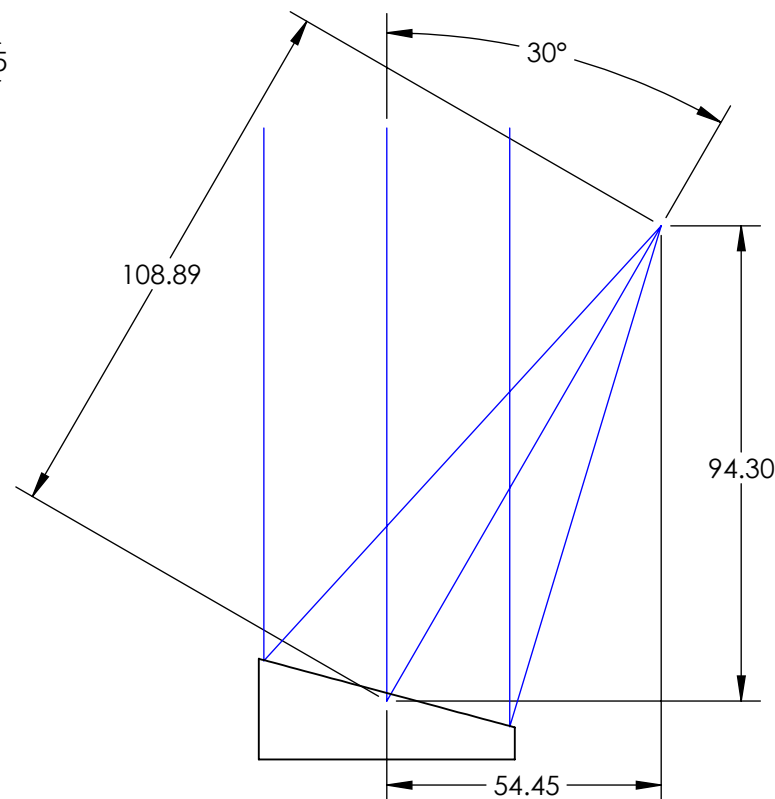
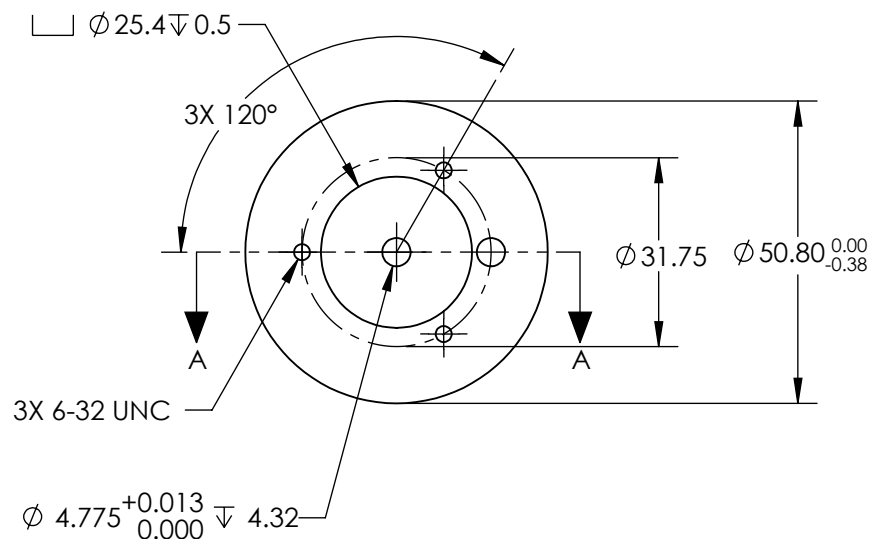
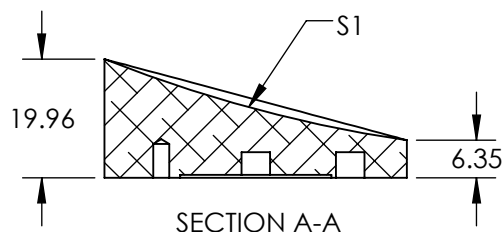
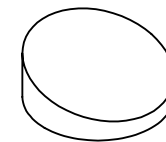





NOTES:

1. SUBSTRATE MATERIAL:  
ALUMINUM
2. FINISH (EXCEPT SURFACE S1):  
BLACK ANODIZED
3. COATING (APPLY ACROSS CLEAR APERTURE)  
S1: PROTECTED GOLD  
R(AVG) >94% @ 0.7-0.8 $\mu$ m  
R(AVG) >97% @ 0.8-2.0 $\mu$ m  
R(AVG) >98% @ 2-12 $\mu$ m  
  
SURFACE ROUGHNESS: <100 Å RMS
4. FOCAL LENGTH TOLERANCE:  $\pm 1\%$
5. ROHS COMPLIANT

**FOR INFORMATION ONLY:  
DO NOT MANUFACTURE  
PARTS TO THIS DRAWING**



SPECIFICATIONS SUBJECT TO CHANGE WITHOUT NOTICE  
DIMENSIONS ARE FOR REFERENCE ONLY

|   |                      |   |        |  |  |
|---|----------------------|---|--------|--|--|
| REV. A  | S1                   | EFL   | 108.89 |  Edmund Optics® |  |
| SHAPE   | PARABOLIC            | PFL   | 101.60 |  |  |
| REFLECTIVE WAVEFRONT<br>DISTORTION AT 632.8nm (RMS) | 1λ                   |  |        | TITLE  | Ø50.8 X 108.89mm EFL 30° OAP PROTECTED<br>GOLD MIRROR 100Å |
| SURFACE FIGURE AT 632.8nm<br>(RMS)                  | λ/2                  |   |        |  |  |
| CLEAR APERTURE                                      | 90%                  |  |        | DWG NO   | 35495  |
| BEVEL   | PROTECTIVE AS NEEDED |   |        |  |  |
|   |                      |   |        | SHEET 1 OF 1   |  |