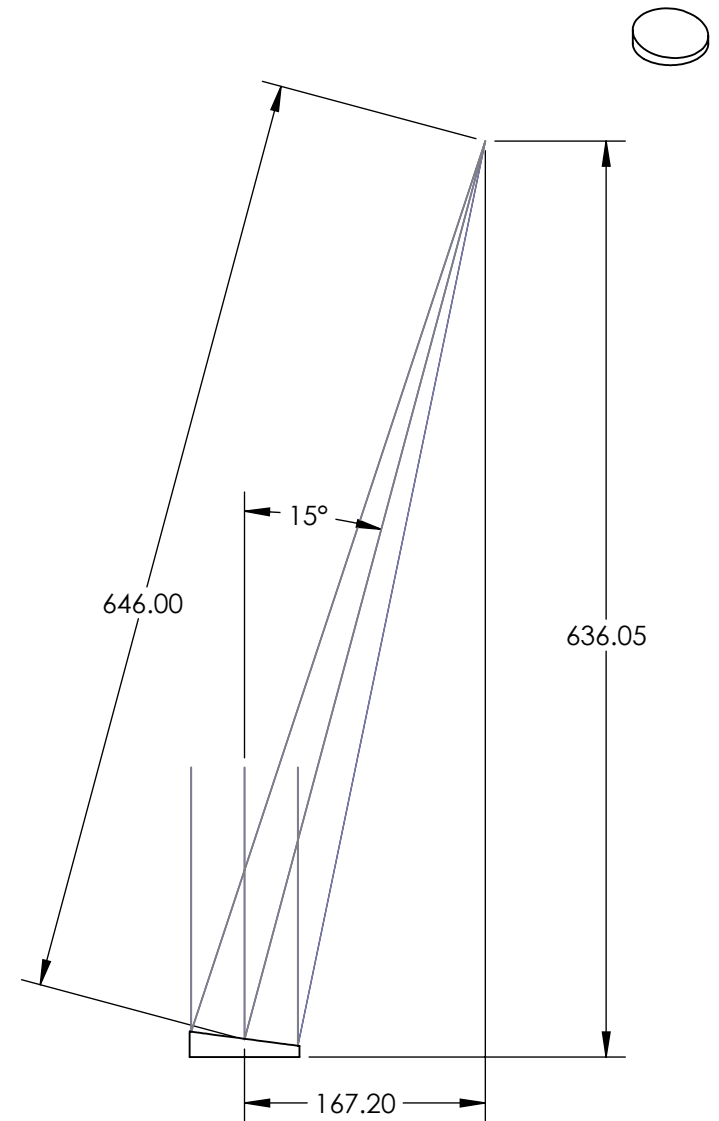
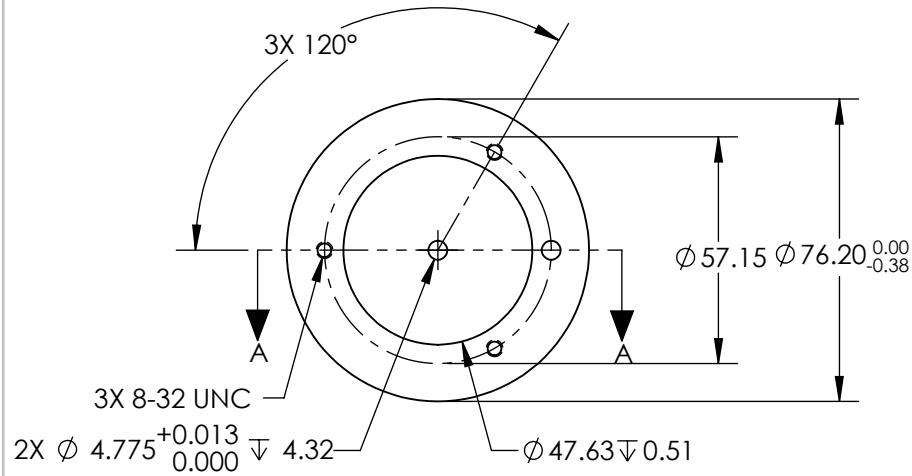
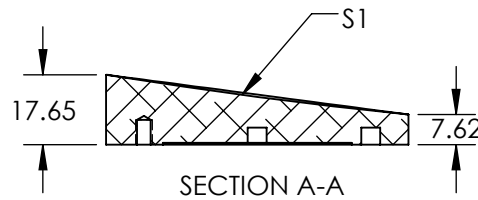


NOTES:


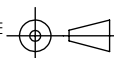
1. SUBSTRATE MATERIAL:
ALUMINUM
2. FINISH (EXCEPT SURFACE S1):
BLACK ANODIZED
3. COATING (APPLY ACROSS CLEAR APERTURE)
S1: BARE GOLD
R(AVG) >94% @ 0.7-0.8 μ m
R(AVG) >97% @ 0.8-2.0 μ m
R(AVG) >98% @ 2-12 μ m

SURFACE ROUGHNESS: <100 Å RMS
4. FOCAL LENGTH TOLERANCE: $\pm 1\%$
5. ROHS COMPLIANT

**FOR INFORMATION ONLY:
DO NOT MANUFACTURE
PARTS TO THIS DRAWING**



SPECIFICATIONS SUBJECT TO CHANGE WITHOUT NOTICE
DIMENSIONS ARE FOR REFERENCE ONLY

REV. A	S1	EFL	646.00	 Edmund Optics®		
SHAPE	PARABOLIC	PFL	635.00			
REFLECTIVE WAVEFRONT DISTORTION AT 632.8nm (RMS)	3/2λ	<div>THIRD ANGLE PROJECTION</div> 	TITLE	Ø76.2 X 646mm EFL 15° OAP BARE GOLD MIRROR 100Å		
SURFACE FIGURE AT 632.8nm (RMS)	3/4λ					
CLEAR APERTURE	90%					
BEVEL	PROTECTIVE AS NEEDED	ALL DIMS IN	mm	DWG NO	35601	SHEET 1 OF 1