

NOTES:

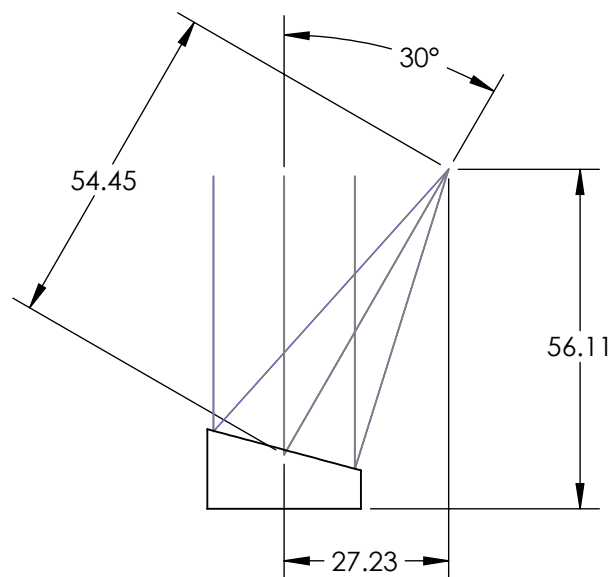
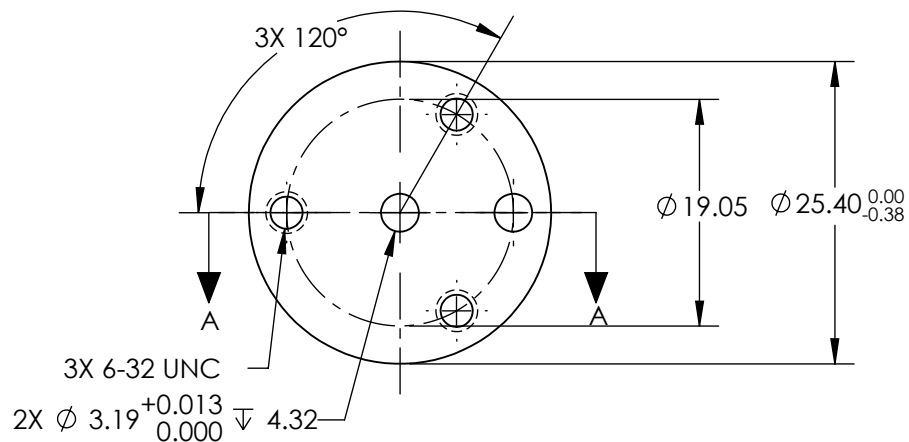
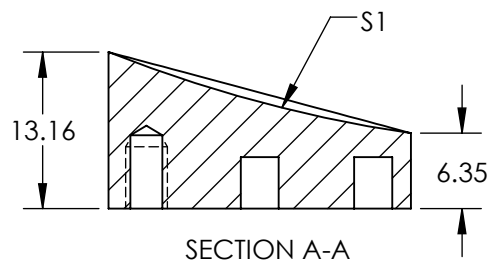
1. SUBSTRATE MATERIAL:
ALUMINUM
2. FINISH (EXCEPT SURFACE S1):
BLACK ANODIZED
3. COATING (APPLY ACROSS CLEAR APERTURE)
S1: PROTECTED GOLD
R(AVG) >94% @ 0.7-0.8 μ m
R(AVG) >97% @ 0.8-2.0 μ m
R(AVG) >98% @ 2-12 μ m

SURFACE ROUGHNESS: <100 Å RMS



4. FOCAL LENGTH TOLERANCE: $\pm 1\%$

5. ROHS COMPLIANT

**FOR INFORMATION ONLY:
DO NOT MANUFACTURE
PARTS TO THIS DRAWING**



SPECIFICATIONS SUBJECT TO CHANGE WITHOUT NOTICE
DIMENSIONS ARE FOR REFERENCE ONLY

REV. A	S1	EFL	54.45	 Edmund Optics®		
SHAPE	PARABOLIC	PFL	50.80			
REFLECTIVE WAVEFRONT DISTORTION AT 632.8nm (RMS)	$\lambda/2$	<div>THIRD ANGLE PROJECTION</div> 	TITLE	Ø25.4 X 54.45mm EFL 30° OAP PROTECTED GOLD MIRROR 100Å		
SURFACE FIGURE AT 632.8nm (RMS)	$\lambda/4$					
CLEAR APERTURE	90%					
BEVEL	PROTECTIVE AS NEEDED	ALL DIMS IN	mm	DWG NO	35491	SHEET 1 OF 1