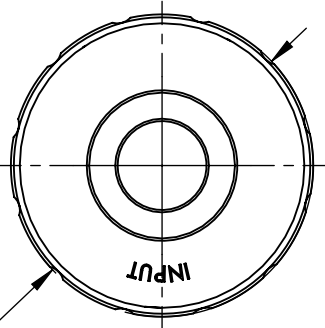
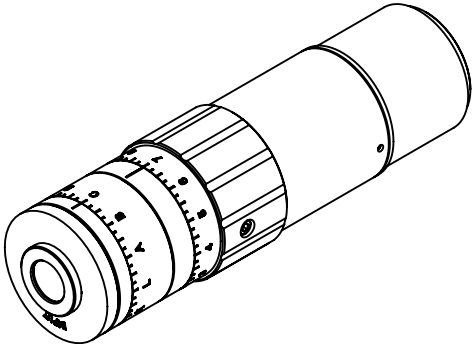
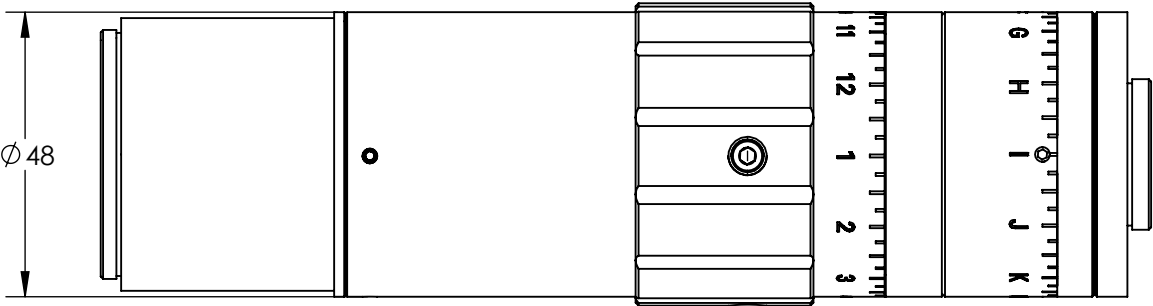
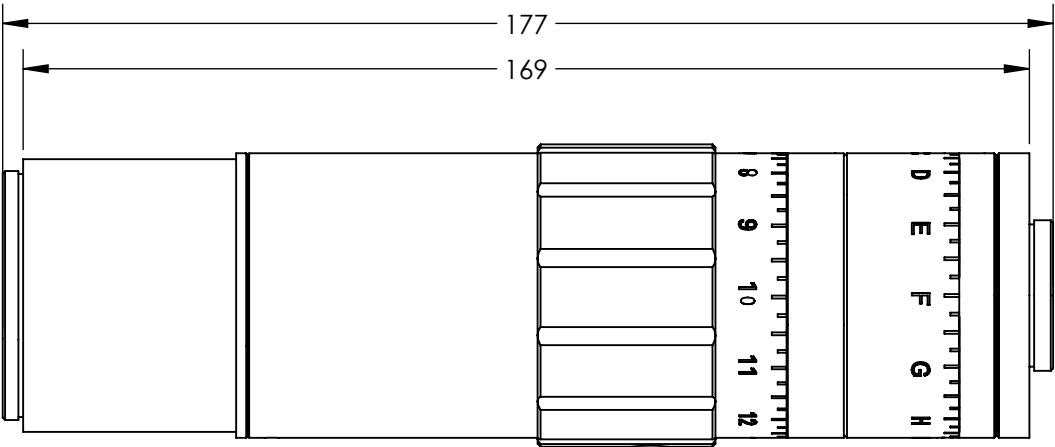


NOTES:

- 1. COATING (APPLY ACROSS CLEAR APERTURE)
LASER V-COAT
R(abs) 0.25% @ 355 nm
- 2. RoHS COMPLIANT

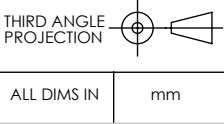


Ø51

**FOR INFORMATION ONLY:
DO NOT MANUFACTURE
PARTS TO THIS DRAWING**

SPECIFICATIONS SUBJECT TO CHANGE WITHOUT NOTICE
DIMENSIONS ARE FOR REFERENCE ONLY

REV. A	
DAMAGE THRESHOLD (PULSED)	1 J/cm ² @ 10ns, 20Hz, 355nm
DESIGN WAVELENGTH DWL (nm)	355
TRANSMISSION	>95% @ DWL
TRANSMITTED WAVEFRONT, P-V	<λ/4 for Input Beam ≤4mm (2X-6X) <λ/4 for Input Beam ≤2mm (>6X)



Edmund Optics®

TITLE	355 nm 2X - 8X VARIABLE BEAM EXPANDER
DWG NO	87566
SHEET	1 OF 1