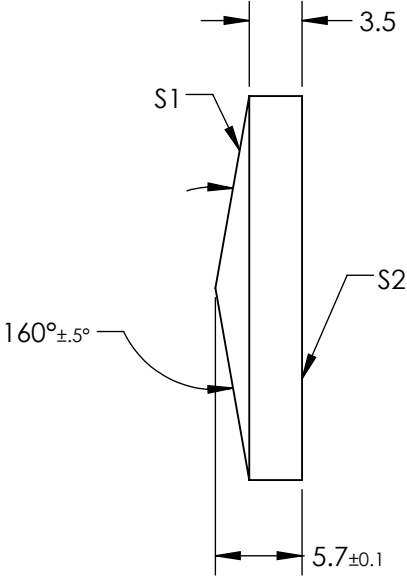
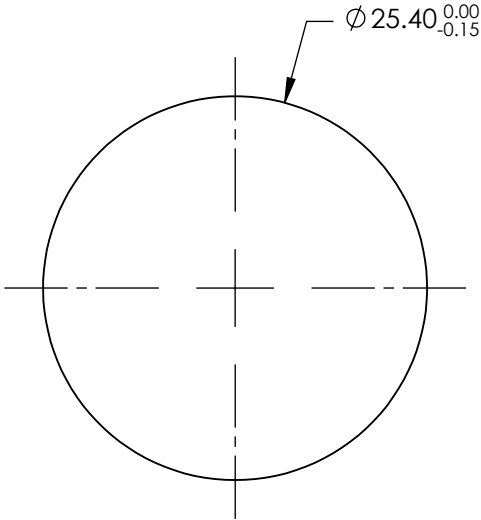


NOTES:

- 1. SUBSTRATE MATERIAL:  
FUSED SILICA
- 2. COATING (APPLY ACROSS CLEAR APERTURE)  
  
S1 & S2: R(AVG) ≤0.8% @ 600 - 1100nm
- 3. RoHS COMPLIANT



**FOR INFORMATION ONLY:**  
**DO NOT MANUFACTURE**  
**PARTS TO THIS DRAWING**

SPECIFICATIONS SUBJECT TO CHANGE WITHOUT NOTICE  
DIMENSIONS ARE FOR REFERENCE ONLY

|                  | S1                   | S2                   |
|------------------|----------------------|----------------------|
| SHAPE            | CONICAL              | PLANO                |
| SURFACE ACCURACY | $\lambda/4$          | $\lambda/4$          |
| SURFACE QUALITY  | 40-20                | 40-20                |
| CLEAR APERTURE   | >90%                 | >90%                 |
| BEVEL            | PROTECTIVE AS NEEDED | PROTECTIVE AS NEEDED |

|                        |  |                |  |
|------------------------|--|----------------|--|
| THIRD ANGLE PROJECTION |  | Edmund Optics® |  |
| ALL DIMS IN            |  | TITLE          | 160° APEX ANGLE, 25.4MM DIA, NIR I COATED AXICON |
| mm                     |  | DWG NO         | 83809  |
|                        |  | SHEET 1 OF 1   |  |