

NOTES:

1. SUBSTRATE MATERIAL:  
N-BK7
2. COATING (APPLY ACROSS CLEAR APERTURE)

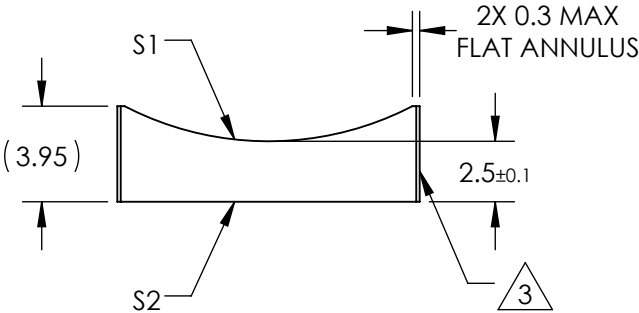
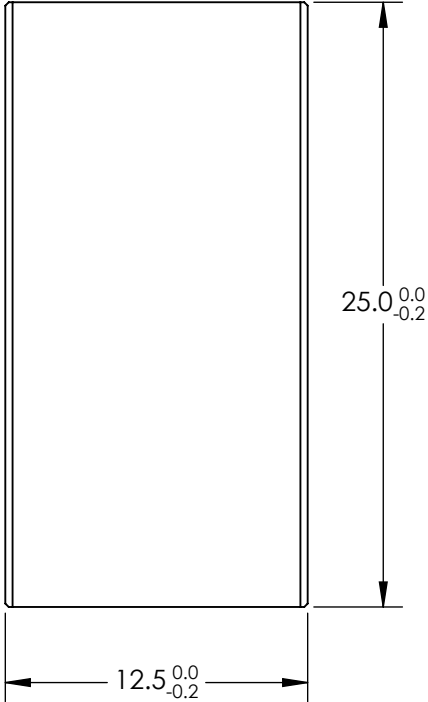
S1 & S2: NIR I

R(avg)  $\leq 0.5\%$  @ 600 - 1050nm


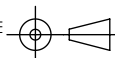
3. FINE GROUND SURFACE

4. POWER, IRREGULARITY, AND SURFACE QUALITY  
SPECIFICAIONS APPLY ACROSS CLEAR APERTURE
5. RoHS COMPLIANT

**FOR INFORMATION ONLY:  
DO NOT MANUFACTURE  
PARTS TO THIS DRAWING**



SPECIFICATIONS SUBJECT TO CHANGE WITHOUT NOTICE  
DIMENSIONS ARE FOR REFERENCE ONLY

REV. A	S1	S2	<div><div>EFL</div><div>-25</div></div> <div><div>BFL</div><div>-26.65</div></div> <div><div> Edmund Optics®</div></div>				
SHAPE	CONVEX	PLANO					
RADIUS	12.92	∞					
SURFACE QUALITY	60-40	60-40	<div><div><div>THIRD ANGLE PROJECTION</div><div></div></div><div><div>TITLE</div><div>12.5mm H X 25mm L X -25mm FL NIR I COATED, CYLINDER LENS</div></div></div>				
CLEAR APERTURE	11.50 X 24.00	11.50 X 24.00					
COATING APERTURE	11.50 X 24.00	11.50 X 24.00					
BEVEL	PROTECTED AS NEEDED	PROTECTED AS NEEDED	ALL DIMS IN	mm	DWG NO	69818	SHEET 1 OF 1