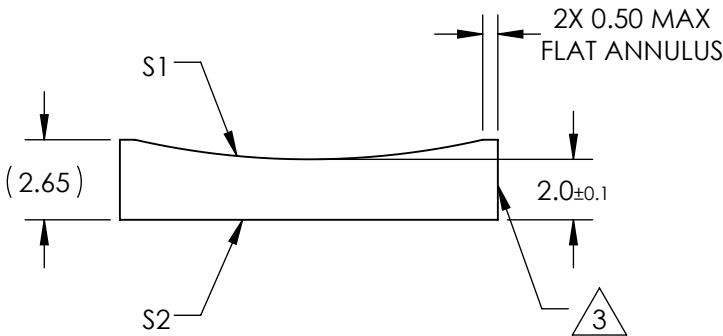
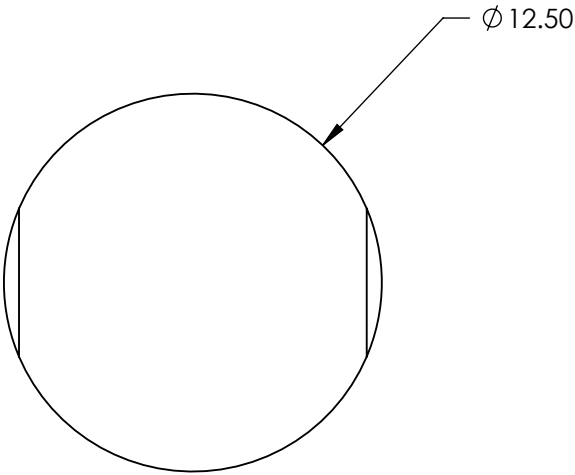


NOTES:

1. SUBSTRATE MATERIAL:
N-BK7
2. COATING (APPLY ACROSS CLEAR APERTURE)
- S1 & S2: NIR I
- R(avg) $\leq 0.5\%$ @ 600 - 1050nm


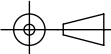
3. FINE GROUND SURFACE

4. POWER, IRREGULARITY, AND SURFACE QUALITY
SPECIFICAIONS APPLY ACROSS CLEAR APERTURE
5. RoHS COMPLIANT



**FOR INFORMATION ONLY:
DO NOT MANUFACTURE
PARTS TO THIS DRAWING**

SPECIFICATIONS SUBJECT TO CHANGE WITHOUT NOTICE
DIMENSIONS ARE FOR REFERENCE ONLY

REV. A	S1	S2					
SHAPE	CONVEX	PLANO	EFL	-50	 Edmund Optics®		
RADIUS	-25.84	∞	BFL	-51.32			
SURFACE QUALITY	60-40	60-40			TITLE	12.5mm DIA X -50mm FL NIR I COATED, CYLINDER LENS	
CLEAR APERTURE	Ø11.50	Ø11.50					
COATING APERTURE	Ø11.50	Ø11.50					
BEVEL	PROTECTED AS NEEDED	PROTECTED AS NEEDED	ALL DIMS IN	mm	DWG NO	69815	SHEET 1 OF 1