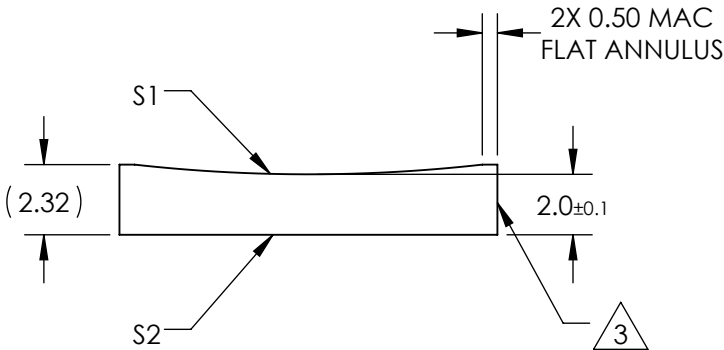
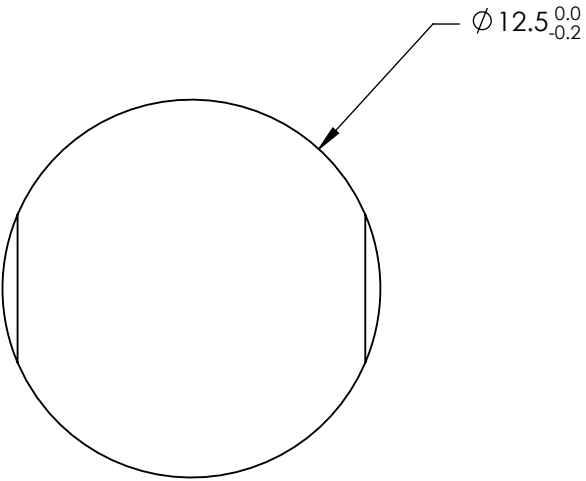


NOTES:

1. SUBSTRATE MATERIAL:  
N-BK7
2. COATING (APPLY ACROSS CLEAR APERTURE)  
  
S1 & S2: NIR I  
  
R(avg)  $\leq 0.5\%$  @ 600 - 1050nm


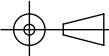
3. FINE GROUND SURFACE

4. POWER, IRREGULARITY, AND SURFACE QUALITY  
SPECIFICAIONS APPLY ACROSS CLEAR APERTURE
5. RoHS COMPLIANT



**FOR INFORMATION ONLY:  
DO NOT MANUFACTURE  
PARTS TO THIS DRAWING**

SPECIFICATIONS SUBJECT TO CHANGE WITHOUT NOTICE  
DIMENSIONS ARE FOR REFERENCE ONLY

REV. A	S1	S2	<div><div>EFL</div><div>-100</div></div> <div><div>BFL</div><div>-101.32</div></div> <div><div> Edmund Optics®</div></div>				
SHAPE	CONVEX	PLANO					
RADIUS	-51.68	∞					
SURFACE QUALITY	60-40	60-40	<div><div>THIRD ANGLE PROJECTION</div><div></div></div>		TITLE	12.5mm DIA X -100mm FL NIR I COATED, CYLINDER LENS	
CLEAR APERTURE	Ø11.50	Ø11.50					
COATING APERTURE	Ø11.50	Ø11.50					
BEVEL	PROTECTED AS NEEDED	PROTECTED AS NEEDED	ALL DIMS IN	mm	DWG NO	69816	SHEET 1 OF 1