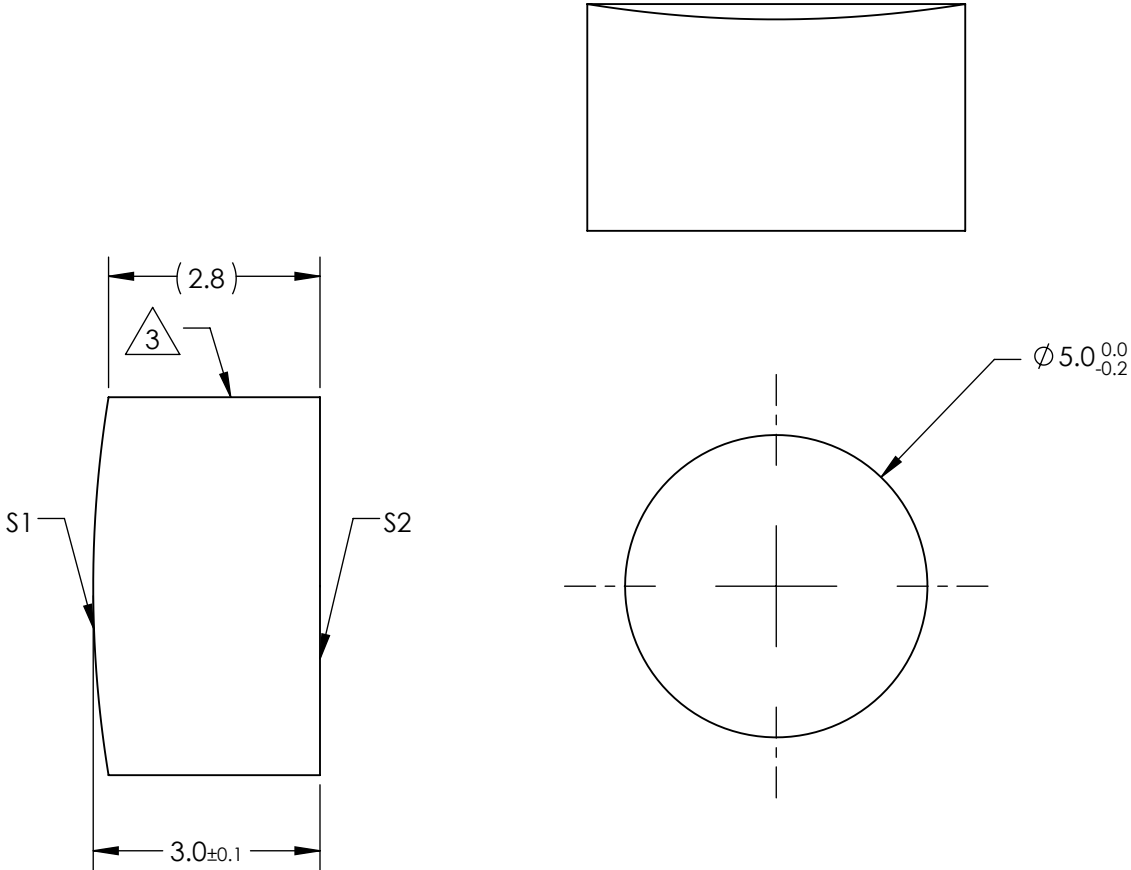



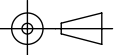
NOTES:

- 1. SUBSTRATE MATERIAL:  
N-BK7
- 2. COATING (APPLY ACROSS CLEAR APERTURE)  
  
S1 & S2: VIS 0°  
  
R(avg) ≤0.4% @ 425 - 675nm
- 3. FINE GROUND SURFACE
- 4. POWER, IRREGULARITY, AND SURFACE QUALITY SPECIFICAIONS APPLY ACROSS CLEAR APERTURE
- 5. RoHS COMPLIANT

**FOR INFORMATION ONLY:  
DO NOT MANUFACTURE  
PARTS TO THIS DRAWING**



SPECIFICATIONS SUBJECT TO CHANGE WITHOUT NOTICE  
DIMENSIONS ARE FOR REFERENCE ONLY

REV. A	S1	S2	EFL	30	 <b>Edmund Optics®</b>		
SHAPE	CONVEX	PLANO	BFL	28.02			
RADIUS	15.5	∞			TITLE	5mm DIA X 30mm FL VIS 0° COATED, CYLINDER LENS	
SURFACE QUALITY	60-40	60-40					
CLEAR APERTURE	Ø4.00	Ø4.00	ALL DIMS IN		DWG NO	69691	
COATING APERTURE	Ø4.00	Ø4.00					
BEVEL	PROTECTED AS NEEDED	PROTECTED AS NEEDED	mm				SHEET 1 OF 1