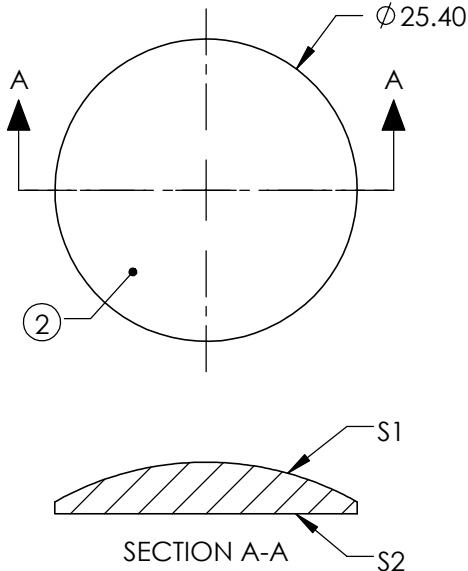
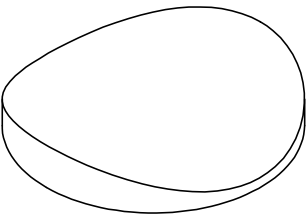



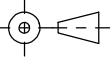
NOTES:

- 1. SUBSTRATE:  
GRADE A FINE ANNEALED
- ②. COATING (APPLY ACROSS COATING APERTURE)  
NONE  
NONE
- 3. CENTERING TOLERANCE (AT 587.6nm):  
PLANO AXIS WEDGE: < 5 ARCMIN  
POWER AXIS WEDGE: < 5 ARCMIN
- △. FINE GRIND SURFACE
- 5. POWER, IRREGULARITY, AND SURFACE QUALITY  
SPECIFICATIONS APPLY ACROSS CLEAR APERTURE
- 6. FOCAL LENGHT (EFL): 50nm  
BACK FOCAL LENGTH (BFL): 47.14nm
- 7. RoHS COMPLIANT



**FOR INFORMATION ONLY:  
DO NOT MANUFACTURE  
PARTS TO THIS DRAWING**

SPECIFICATIONS SUBJECT TO CHANGE WITHOUT NOTICE  
DIMENSIONS ARE FOR REFERENCE ONLY

	S1	S2				
SHAPE	CONVEX	PLANO				
SURFACE QUALITY	40 - 20	40 - 20				
CLEAR APERTURE	Ø22.86	Ø22.86	TITLE			
BEVEL	PROTECTIVE AS NEEDED	PROTECTIVE AS NEEDED	LENS PCX CYLINDER 25.40mm Dia x 50.00mm EFL			
			ALL DIMS IN	mm	DWG NO	SHEET
					34611	1 OF 1