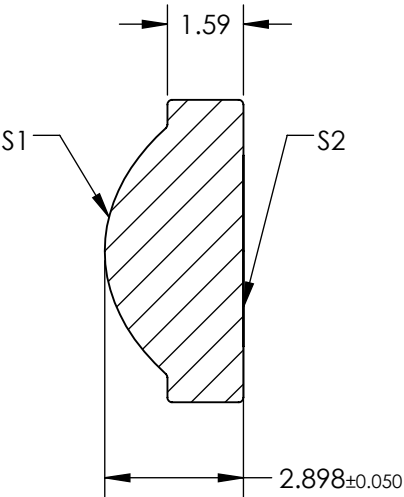
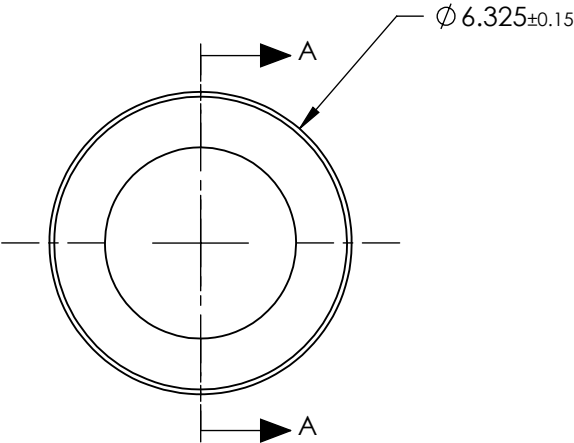


NOTES:

- 1. SUBSTRATE:  
D-LAK6
- 2. NUMERICAL APERTURE: 0.6
- 3. COATING  
S1 & S2: R(ABS) < 1.0% @ 350 - 500nm
- 4. FOCAL LENGTH TOLERANCE: ±1%
- 5. TRANSMITTED WAVEFRONT ERROR (λ, RMS): < 0.15


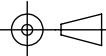


SECTION A-A

**FOR INFORMATION ONLY:  
DO NOT MANUFACTURE  
PARTS TO THIS DRAWING**

SPECIFICATIONS SUBJECT TO CHANGE WITHOUT NOTICE DIMENSIONS ARE FOR REFERENCE ONLY

	S1	S2
SHAPE	CONVEX	PLANO
SURFACE QUALITY	40 - 20	40 - 20
CLEAR APERTURE	Ø4.80	Ø4.80
BEVEL MAX	PROTECTIVE AS NEEDED	PROTECTIVE AS NEEDED

EFL	4.02	 <b>Edmund Optics®</b>		
BFL	2.41			
THIRD ANGLE PROJECTION		TITLE	405, 0.6 NA, BBAR COATED, ASPHERIC LENS	
ALL DIMS IN	mm	DWG NO	83990	SHEET 1 OF 1