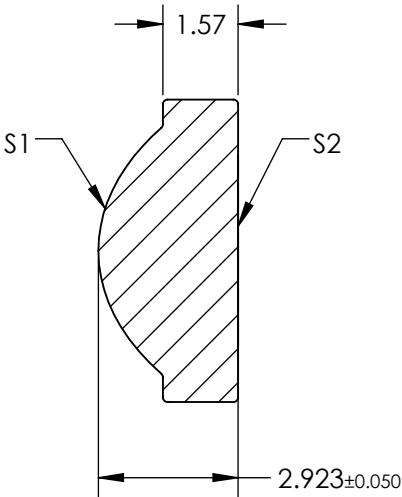
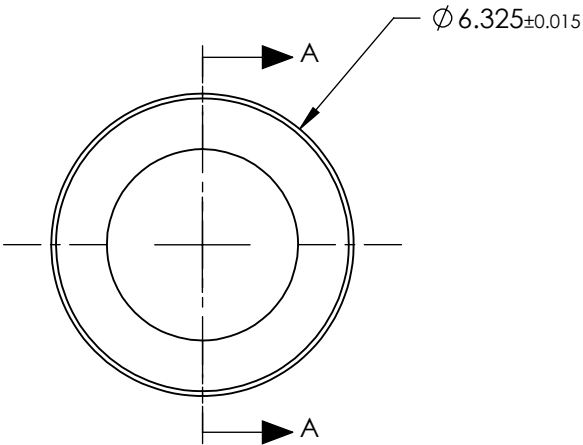


NOTES:

- 1. SUBSTRATE:  
D-LAK6
- 2. NUMERICAL APERTURE: 0.61
- 3. COATING  
S1 & S2: R(ABS) < 1.0% @ 350 - 500nm
- 4. FOCAL LENGTH TOLERANCE: ±1%
- 5. TRANSMITTED WAVEFRONT ERROR (λ, RMS): < 0.070


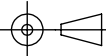


SECTION A-A

**FOR INFORMATION ONLY:  
DO NOT MANUFACTURE  
PARTS TO THIS DRAWING**

SPECIFICATIONS SUBJECT TO CHANGE WITHOUT NOTICE DIMENSIONS ARE FOR REFERENCE ONLY

	S1	S2
SHAPE	CONVEX	PLANO
SURFACE QUALITY	20 - 10	20 - 10
CLEAR APERTURE	Ø4.80	Ø4.80
BEVEL MAX	PROTECTIVE AS NEEDED	PROTECTIVE AS NEEDED

EFL	4.00	 <b>Edmund Optics®</b>	
BFL	2.37		
THIRD ANGLE PROJECTION 	TITLE	488, 0.61 NA, BBAR COATED, ASPHERIC LENS	
ALL DIMS IN mm	DWG NO	83681	SHEET 1 OF 1