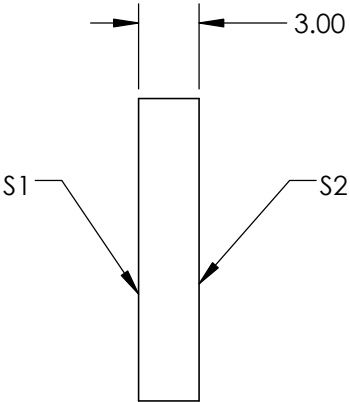
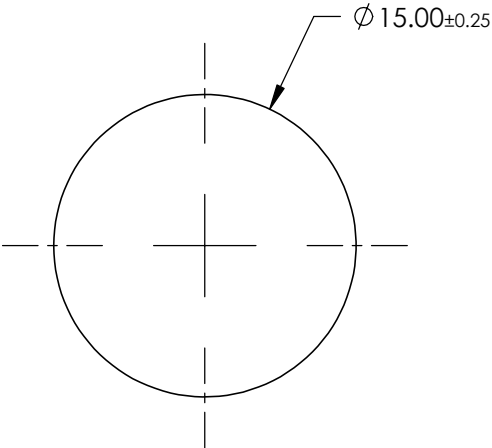
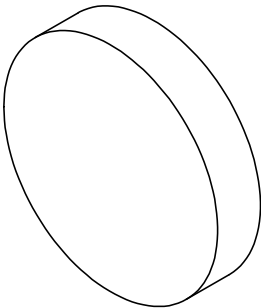


NOTES:

- 1. SUBSTRATE: Float Glass
- 2. COATING SPECIFICATION:
  - VIS Laser
  - S1: R(abs) >97% @ 633nm
  - S2: 0
- 3. POWER, IRREGULARITY, AND SURFACE QUALITY SPECIFICATIONS  
APPLY ACROSS CLEAR APERTURE
- 4. ROHS COMPLIANT

**FOR INFORMATION ONLY:  
DO NOT MANUFACTURE  
PARTS TO THIS DRAWING**



SPECIFICATIONS SUBJECT TO CHANGE WITHOUT NOTICE  
DIMENSIONS ARE FOR REFERENCE ONLY

**EO<sup>®</sup> Edmund Optics<sup>®</sup>**

	S1	S2	THIRD ANGLE PROJECTION		TITLE	15mm Diameter Laser Diode Mirror	
SHAPE	PLANO	PLANO					
SURFACE QUALITY	80-50	COMMERCIAL POLISH	ALL DIMS IN		DWG NO	43854	
BEVEL	PROTECTIVE AS NEEDED	PROTECTIVE AS NEEDED				SHEET 1 OF 1	