

NOTES:

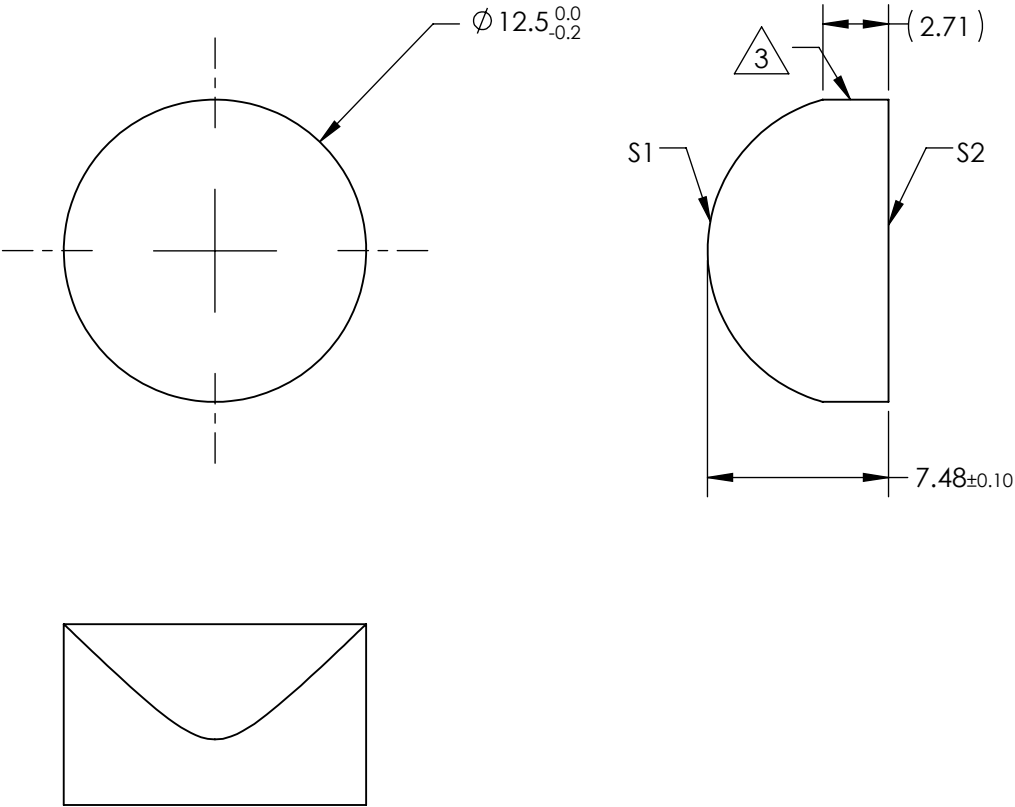
1. SUBSTRATE MATERIAL:  
N-BK7
2. COATING (APPLY ACROSS CLEAR APERTURE)

S1 & S2:  
LASER V-COAT

R(abs) <0.25% @ 1064nm


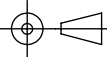
3. FINE GROUND SURFACE

4. POWER, IRREGULARITY, AND SURFACE QUALITY  
SPECIFICAIONS APPLY ACROSS CLEAR APERTURE
5. RoHS COMPLIANT



**FOR INFORMATION ONLY:  
DO NOT MANUFACTURE  
PARTS TO THIS DRAWING**

SPECIFICATIONS SUBJECT TO CHANGE WITHOUT NOTICE  
DIMENSIONS ARE FOR REFERENCE ONLY

	S1	S2	EFL	12.5±3%	 <b>Edmund Optics®</b>	
SHAPE	CONVEX	PLANO	BFL	(7.57)		
RADIUS	6.48	∞	THIRD ANGLE PROJECTION 		TITLE	12.5mm DIA X 12.5mm FL 1064nm V-COAT, CYLINDER LENS
SURFACE QUALITY	60-40	60-40				
CLEAR APERTURE	Ø 11.50	Ø 11.50	ALL DIMS IN		DWG NO	33230
COATING APERTURE	Ø 11.50	Ø 11.50				
BEVEL	PROTECTED AS NEEDED	PROTECTED AS NEEDED	mm		SHEET 1 OF 1	