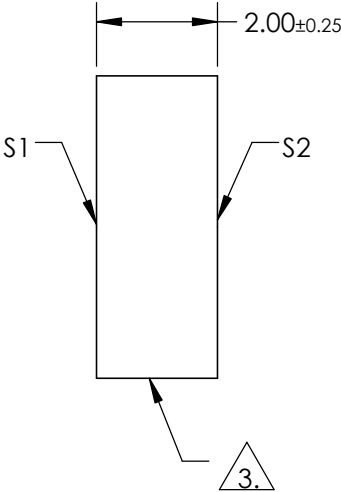
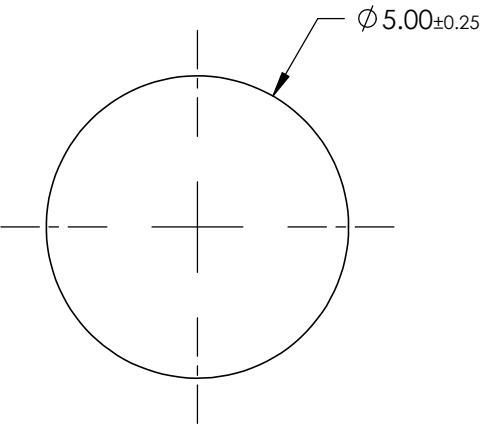
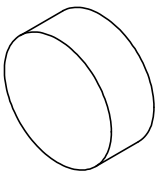


NOTES:

- 1. SUBSTRATE:
BOROFLOAT®
- 2. COATING SPECIFICATION:
S1: Enhanced Aluminum (450-650nm)
R(AVG) >95% @ 450 - 650nm
- 3. FINE GROUND SURFACE
- 4. ROHS COMPLIANT




**FOR INFORMATION ONLY:
DO NOT MANUFACTURE
PARTS TO THIS DRAWING**

SPECIFICATIONS SUBJECT TO CHANGE WITHOUT NOTICE
DIMENSIONS ARE FOR REFERENCE ONLY

	S1	S2
SHAPE	PLANO	PLANO
SURFACE QUALITY	60-40	COMMERCIAL POLISH
CLEAR APERTURE	Ø4.15	N/A
BEVEL	PROTECTIVE AS NEEDED	PROTECTIVE AS NEEDED

THIRD ANGLE
PROJECTION

ALL DIMS IN mm

 Edmund Optics®

TITLE	5mm Dia. Enhanced Aluminum, $\lambda/4$ Mirror		
DWG NO	48404	SHEET 1 OF 1	