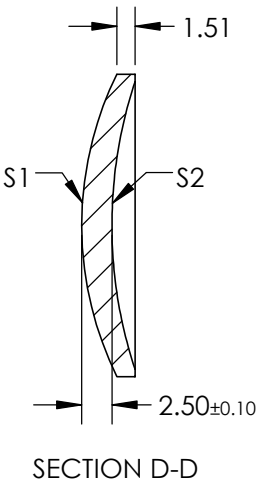
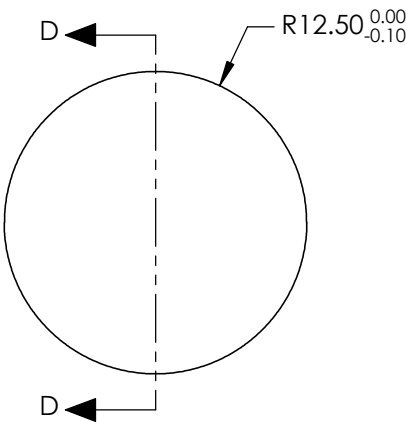


NOTES:


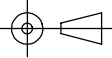
1. SUBSTRATE: GERMANIUM (GE)
2. COATING  
S1: R(avg) <3.0% @ 3 - 5µm  
S2: R(avg) <3.0% @ 3 - 5µm
3. EDGES: DIAMOND TURNED
4. CENTERING: 3-5 arcmin
5. RoHS: COMPLIANT
6. ASPHERIC SURFACE DESCRIBED BY THE FOLLOWING EQUATION AND COEFFICIENTS SHOWN IN TABLE BELOW

$$Z_{ASPH}(Y) = \frac{(\frac{1}{RADIUS}) * Y^2}{1 + \sqrt{1 - (1+k) * (\frac{1}{RADIUS})^2 * Y^2}} + D * Y^2 + E * Y^4 + F * Y^6 + G * Y^8 + H * Y^{10} + J * Y^{12} + L * Y^{14}$$



COEFFICIENT TABLE	
COEFFICIENT	S1
k	0.000000E+00
D	0.000000E+00
E	-4.0717046E-7
F	-4.2526816E-10
G	-8.6794524E-13
H	0.000000E+00
J	0.000000E+00
L	0.000000E+00

SPECIFICATIONS SUBJECT TO CHANGE WITHOUT NOTICE  
DIMENSIONS ARE FOR REFERENCE ONLY

	S1	S2				
SHAPE	CONVEX	CONCAVE	EFL @ 4000nm: 30	 <b>Edmund Optics®</b>		
RADIUS	28.270	38.000	BFL @ 4000nm: 28			
SURFACE ACCURACY	0.3µm	N/A		TITLE 25mm DIA X 30mm FL 3-5µm COATED, HYBRID GE ASPHERIC LENS		
SURFACE QUALITY	60-40	60-40				
CLEAR APERTURE	96%	96%				
BEVEL	PROTECTIVE AS NEEDED	PROTECTIVE AS NEEDED	ALL DIMS IN	mm	DWG NO	68263
					SHEET 1 OF 1	